

Month of EPL Report:	Date of Original Publishing:	Date of Correction:	Date of Republishing:	Correction/s made:
January 2020	05/02/2020	08/2020	02/09/2020	<ul style="list-style-type: none"> <li>Water Quality (Conductivity units) changed for all EPL ID points in Tables 1, 2 and 3 from 'mS/cm' to 'µS/cm'</li> <li>Water Quality (Conductivity) added as a sampling point in Table 2.</li> <li>Water Quality (Conductivity units): Note indicating the wrong unit below Table 3 is amended to indicate this change throughout all reports.</li> </ul>
February 2020	13/03/2020	08/2020	02/09/2020	<ul style="list-style-type: none"> <li>Water Quality (Conductivity units) changed for all EPL ID points in Tables 1, 2 and 3 from 'mS/cm' to 'µS/cm'</li> <li>Water Quality (Conductivity) added as a sampling point in Table 2.</li> <li>Water Quality (Conductivity) sample results added for discharge samples in Table 2, EPL IDs 1, 2, 3 &amp; 27. Note: This is not a compliance parameter and levels are not reported.</li> <li>Water Quality (Conductivity units): Note indicating the wrong unit below Table 3 is amended to indicate this change throughout all reports.</li> </ul>
March 2020	09/04/2020	08/2020	02/09/2020	<ul style="list-style-type: none"> <li>Water Quality (Conductivity units) changed for all EPL ID points in Tables 1, 2 and 3 from 'mS/cm' to 'µS/cm'</li> <li>Water Quality (Conductivity) added as a sampling point in Table 2.</li> <li>Water Quality (Conductivity units): Note indicating the wrong unit below Table 3 is amended to indicate this change throughout all reports.</li> <li>Noise (criteria) has been updated in Table 4 to include weather conditions, L<sub>Amax</sub>, L<sub>Amin</sub>, L<sub>A10</sub> and L<sub>A90</sub> parameters. Notes were also written below Table 4 to exhibit acronyms and non-compliant weather conditions.</li> <li>Noise (criteria): Table 4 title has been updated to be more indicative of the monitoring occurring, with a subtitle including noise limits for each period.</li> <li>Noise (criteria): a short but comprehensive summary was written below Table 4 as an interpretation of the results displayed.</li> </ul>
April 2020	12/05/2020	08/2020	02/09/2020	<ul style="list-style-type: none"> <li>Water Quality (Conductivity units) changed for all EPL ID points in Tables 1, 2 and 3 from 'mS/cm' to 'µS/cm'</li> </ul>

				<ul style="list-style-type: none"> <li>• Water Quality (Conductivity) added as a sampling point in Table 2.</li> <li>• Water Quality (Conductivity units): Note indicating the wrong unit below Table 3 is amended to indicate this change throughout all reports.</li> </ul>
May 2020	10/06/2020	08/2020	02/09/2020	<ul style="list-style-type: none"> <li>• Water Quality (Conductivity units) changed for all EPL ID points in Tables 1, 2 and 3 from 'mS/cm' to 'µS/cm'</li> <li>• Water Quality (Conductivity) added as a sampling point in Table 2.</li> <li>• Water Quality (Conductivity units): Note indicating the wrong unit below Table 3 is amended to indicate this change throughout all reports.</li> </ul>
June 2020	10/07/2020	08/2020	02/09/2020	<ul style="list-style-type: none"> <li>• Water Quality (Conductivity units) changed for all EPL ID points in Tables 1, 2 and 3 from 'mS/cm' to 'µS/cm'</li> <li>• Water Quality (Conductivity) added as a sampling point in Table 2.</li> <li>• Noise (criteria) has been updated in Table 4 to include weather conditions, LAmax, LAmin, LA10 and LA90 parameters. Notes were also written below Table 4 to exhibit acronyms and non-compliant weather conditions.</li> <li>• Noise (criteria): Table 4 title has been updated to be more indicative of the monitoring occurring, with a subtitle including noise limits for each period.</li> <li>• Noise (criteria): a short but comprehensive summary was written below Table 4 as an interpretation of the results displayed.</li> </ul>
July	06/08/2020	08/2020	02/09/2020	<ul style="list-style-type: none"> <li>• Water Quality (Conductivity units) changed for all EPL ID points in Tables 1, 2 and 3 from 'mS/cm' to 'µS/cm'</li> <li>• Water Quality (Conductivity) added as a sampling point in Table 2.</li> <li>• Water Quality (Conductivity units): Note indicating the wrong unit below Table 3 is amended to indicate this change throughout all reports.</li> </ul>

## TARRAWONGA COAL MINE – MONTHLY MONITORING SUMMARY

### Site Information

**EPL No:** 12365

**EPA Website Link:** <http://www.epa.nsw.gov.au/prpoeoapp/ViewPOEOLicence.aspx?DOCID=55113&SYSUID=1&LICID=12365>

**Licensee:** Tarrawonga Coal Pty Ltd

**Licensee Address:** Tarrawonga Coal Mine, 469 Goonbri Road, BOGGABRI NSW 2382

**EPL Monitoring Points:** See Figure 1 below

**Sampling Period:** January 2020

**Obtained Date:** 3/02/2020

**Publication Date:** 3/02/2020

**Table 1 - No Pollutant Limits Apply**

EPL ID	Pollutant	Units of Measure	Monitoring Frequency	No. of Samples for the Month	Date Sampled	Date of Max. Value Obtained	Min Value	Mean Value	Median Value	Max or Only Value	Comments
5	TSS	mg/L	Upon discharge	0	-	-	-	-	-	-	-
	Conductivity	µS /cm		0	-	-	-	-	-	-	-
	Oil & Grease	mg/L		0	-	-	-	-	-	-	-
	pH	pH		0	-	-	-	-	-	-	-
6	TSS	mg/L	Upon discharge	0	-	-	-	-	-	-	-
	Conductivity	µS /cm		0	-	-	-	-	-	-	-
	Oil & Grease	mg/L		0	-	-	-	-	-	-	-
	pH	pH		0	-	-	-	-	-	-	-
7	TSS	mg/L	Upon discharge	0	-	-	-	-	-	-	-
	Conductivity	µS /cm		0	-	-	-	-	-	-	--
	Oil & Grease	mg/L		0	-	-	-	-	-	-	-
	pH	pH		0	-	-	-	-	-	-	-
8	TSS	mg/L	Upon discharge	0	-	-	-	-	-	-	-
	Conductivity	µS /cm		0	-	-	-	-	-	-	-
	Oil & Grease	mg/L		0	-	-	-	-	-	-	-
	pH	pH		0	-	-	-	-	-	-	-

Table 2 - Pollutant Limits Apply

EPL ID	Pollutant	Units of Measure	Monitoring Frequency	No. of Samples for the Month	Date Sampled	Date of Max. Value Obtained	Min Value	Max or Only Value	100%ile Limit	Exceedance (Yes/No)	Comments
1	TSS	mg/L	Upon discharge	0	-	-	-	-	-	-	-
	Conductivity	μS/cm		0	-	-	-	-	-	-	-
	Oil & Grease	mg/L		0	-	-	-	-	-	-	-
	pH	pH		0	-	-	-	-	-	-	-
2	TSS	mg/L	Upon discharge	0	-	-	-	-	-	-	-
	Conductivity	μS/cm		0	-	-	-	-	-	-	-
	Oil & Grease	mg/L		0	-	-	-	-	-	-	-
	pH	pH		0	-	-	-	-	-	-	-
3	TSS	mg/L	Upon discharge	0	-	-	-	-	-	-	-
	Conductivity	μS/cm		0	-	-	-	-	-	-	-
	Oil & Grease	mg/L		0	-	-	-	-	-	-	-
	pH	pH		0	-	-	-	-	-	-	-
24	TSS	mg/L	Upon discharge	0	-	-	-	-	-	-	-
	Conductivity	μS/cm		0	-	-	-	-	-	-	-
	Oil & Grease	mg/L		0	-	-	-	-	-	-	-
	pH	pH		0	-	-	-	-	-	-	-
25	TSS	mg/L	Upon discharge	0	-	-	-	-	-	-	-
	Conductivity	μS/cm		0	-	-	-	-	-	-	-
	Oil & Grease	mg/L		0	-	-	-	-	-	-	-
	pH	pH		0	-	-	-	-	-	-	-
26	TSS	mg/L	Upon discharge	0	-	-	-	-	-	-	-
	Conductivity	μS/cm		0	-	-	-	-	-	-	-
	Oil & Grease	mg/L		0	-	-	-	-	-	-	-
	pH	pH		0	-	-	-	-	-	-	-
27	TSS	mg/L	Upon discharge	0	-	-	-	-	-	-	-
	Conductivity	μS/cm		0	-	-	-	-	-	-	-
	Oil & Grease	mg/L		0	-	-	-	-	-	-	-
	pH	pH		0	-	-	-	-	-	-	-

**Table 3 – Monitoring (Quarterly & 6 Monthly – No Limits apply)**

EPL ID	Pollutant	Units of Measure	Monitoring Frequency	No. of Samples for the Period	Date Sampled	Date of Max. Value Obtained	Min Value	Mean Value	Median Value	Max or Only Value
9	Conductivity	µS /cm	6 monthly – (Mar- Sep)	0	-	-	-	-	-	-
	Lead	mg/L		0	-	-	-	-	-	-
	pH	pH		0	-	-	-	-	-	-
	Standing Water Level	metres		0	-	-	-	-	-	-
10	Conductivity	µS /cm	6 monthly – (Mar- Sep)	0	-	-	-	-	-	-
	Lead	mg/L		0	-	-	-	-	-	-
	pH	pH		0	-	-	-	-	-	-
	Standing Water Level	metres		0	-	-	-	-	-	-
11	Conductivity	µS /cm	6 monthly – (Mar- Sep)	0	-	-	-	-	-	-
	Lead	mg/L		0	-	-	-	-	-	-
	pH	pH		0	-	-	-	-	-	-
	Standing Water Level	metres		0	-	-	-	-	-	-
12	Conductivity	µS /cm	6 monthly – (Mar- Sep)	0	-	-	-	-	-	-
	Lead	mg/L		0	-	-	-	-	-	-
	pH	pH		0	-	-	-	-	-	-
	Standing Water Level	metres		0	-	-	-	-	-	-
13	Conductivity	µS /cm	Quarterly - (Feb, May, Aug, Nov)	0	-	-	-	-	-	-
	Oil & Grease	mg/L		0	-	-	-	-	-	-
	pH	pH		0	-	-	-	-	-	-
	TSS	mg/L		0	-	-	-	-	-	-

*Note: From April 2012 to February 2019, Electrical Conductivity was reported with the incorrect unit of measure (mS/cm). From January 2019 it has been corrected to µS/cm.*

**Table 4 – Quarterly Attended Noise Monitoring.**

(Noise Limits Apply - 35dB LAeq(15min) - Day, Evening and Night; 45dB LA1(1min) - Night )

*No Noise Monitoring data reported for January*

**Table 5 – Monthly Monitoring (Blasts – Limits Apply)**

Location	Parameter	Units of Measure	Frequency	No. of Blasts for the Month	Average Value	Max Value	100%ile Limit	(Potential) Non-compliance /breach	Date of Max Value Obtained
Tarrawonga*	Blast Noise	dB (Lin Peak)	Every Blast	6	98.67	104.40	N/A	N/A	15/01/2020
	Blast Vibration	mm/s	Every Blast	6	0.23	0.43	N/A	N/A	30/01/2020
Coomalgah	Blast Noise	dB (Lin Peak)	Every Blast	6	98.57	107.40	120	Nil	31/01/2020
	Blast Vibration	mm/s	Every Blast	6	0.15	0.22	10	Nil	30/01/2020

*\*Mine owned property – no limit apply*

**Table 6- Monthly Monitoring (Dust PM10 – No Limits apply)**

Location	No. of samples required by licence	Lowest sample value	Mean of sample	Highest sample value
“Flixton” property* TEOM (µg/m <sup>3</sup> )	Continuous	5.1	48.9	128.1

*\*Mine owned property – no limit apply*

## TARRAWONGA COAL MINE – MONTHLY MONITORING SUMMARY

### Site Information

**EPL No:** 12365

**EPA Website Link:** <http://www.epa.nsw.gov.au/prpoeoapp/ViewPOEOLicence.aspx?DOCID=55113&SYSUID=1&LICID=12365>

**Licensee:** Tarrawonga Coal Pty Ltd

**Licensee Address:** Tarrawonga Coal Mine, 469 Goonbri Road, BOGGABRI NSW 2382

**EPL Monitoring Points:** See Figure 1 below

**Sampling Period:** February 2020

**Obtained Date:** 3/03/2020

**Publication Date:** 13/03/2020

**Table 1 - No Pollutant Limits Apply**

EPL ID	Pollutant	Units of Measure	Monitoring Frequency	No. of Samples for the Month	Date Sampled	Date of Max. Value Obtained	Min Value	Mean Value	Median Value	Max or Only Value	Comments
5	TSS	mg/L	Upon discharge	2	08.02/ 19.02	19.02	67	207.5	-	348	-
	Conductivity	µS/cm		2	08.02/ 19.02	08.02	174	210	-	246	-
	Oil & Grease	mg/L		2	08.02/ 19.02	08.02/19.02	<5	<5	-	<5	-
	pH	pH		2	08.02/ 19.02	19.02	7.51	7.56	-	7.6	-
6	TSS	mg/L	Upon discharge	2	08.02/ 19.02	19.02	57	403.5	-	750	-
	Conductivity	µS/cm		2	08.02/ 19.02	19.02	122	162	-	202	-
	Oil & Grease	mg/L		2	08.02/ 19.02	08.02	<5	5.5	-	6	-
	pH	pH		2	08.02/ 19.02	08.02	7.31	7.52	-	7.72	-



**Table 2 - Pollutant Limits Apply**

EPL ID	Pollutant	Units of Measure	Monitoring Frequency	No. of Samples for the Month	Date Sampled	Date of Max. Value Obtained	Min Value	Max or Only Value	100%ile Limit	Exceedance (Yes/No)	Comments
1	TSS	mg/L	Upon discharge	1	08.02	08.02	-	2,030	50 (Except after 38.5mm over 5 days)	Y	Exceeded TSS limit but allowed according to condition L2.5. because Discharge occurred after 158.6 mm of rainfall in 24 hrs
	Conductivity	µS/cm		1	08.02	08.02	-	169	Nil	NA	-
	Oil & Grease	mg/L		1	08.02	08.02	-	6	10	N	-
	pH	pH		1	08.02	08.02	-	7.92	6.5-8.5	N	-
2	TSS	mg/L	Upon discharge	2	08.02/ 19.02	19.02	300	480	50 (Except after 38.5mm over 5 days)	Y	Exceeded TSS limit but allowed according to condition L2.5. because Discharge occurred after 158.6 mm of rainfall in 24 hrs
	Conductivity	µS/cm		2	08.02/ 19.02	19.02	90	138	Nil	NA	-
	Oil & Grease	mg/L		2	08.02/ 19.02	08.02	<5	6	10	N	-
	pH	pH		2	08.02/ 19.02	19.02	7.77	7.79	6.5-8.5	N	-
3	TSS	mg/L	Upon discharge	1	08.02	08.02	-	17,700	50 (Except after 38.5mm over 5 days)	Y	Exceeded TSS limit but allowed according to condition L2.5. because Discharge occurred after 158.6 mm of rainfall in 24 hrs

EPL ID	Pollutant	Units of Measure	Monitoring Frequency	No. of Samples for the Month	Date Sampled	Date of Max. Value Obtained	Min Value	Max or Only Value	100%ile Limit	Exceedance (Yes/No)	Comments
	Conductivity	µS/cm		1	08.02	08.02	-	542	Nil	NA	-
	Oil & Grease	mg/L		1	08.02	08.02	-	11	10	Y	Exceedance reported to EPA, DPIE and NRAR
	pH	pH		1	08.02	08.02	-	8.27	6.5-8.5	N	-
24	TSS	mg/L	Upon discharge	0	-	-	-	-	-	-	-
	Conductivity	µS/cm		0	-	-	-	-	-	-	-
	Oil & Grease	mg/L		0	-	-	-	-	-	-	-
	pH	pH		0	-	-	-	-	-	-	-
26	TSS	mg/L	Upon discharge	0	-	-	-	-	-	-	-
	Conductivity	µS/cm		0	-	-	-	-	-	-	-
	Oil & Grease	mg/L		0	-	-	-	-	-	-	-
	pH	pH		0	-	-	-	-	-	-	-
27	TSS	mg/L	Upon discharge	1	08.02	08.02	-	463	50 (Except after 38.5mm over 5 days)	Y	Exceeded TSS limit but allowed according to condition L2.5. because Discharge occurred after 158.6 mm of rainfall in 24 hrs
	Conductivity	µS/cm		1	08.02	08.02	-	69	Nil	N	-
	Oil & Grease	mg/L		1	08.02	08.02	-	6	10	N	-

EPL ID	Pollutant	Units of Measure	Monitoring Frequency	No. of Samples for the Month	Date Sampled	Date of Max. Value Obtained	Min Value	Max or Only Value	100%ile Limit	Exceedance (Yes/No)	Comments
	pH	pH		1	08.02	08.02	-	7.39	6.5-8.5	N	-

**Table 3 – Monitoring (Quarterly & 6 Monthly – No Limits apply)**

EPL ID	Pollutant	Units of Measure	Monitoring Frequency	No. of Samples for the Period	Date Sampled	Date of Max. Value Obtained	Min Value	Mean Value	Median Value	Max or Only Value
9	Conductivity	µS/cm	6 monthly – (Mar- Sep)	0	-	-	-	-	-	-
	Lead	mg/L		0	-	-	-	-	-	-
	pH	pH		0	-	-	-	-	-	-
	Standing Water Level	metres		0	-	-	-	-	-	-
10	Conductivity	µS/cm	6 monthly – (Mar- Sep)	0	-	-	-	-	-	-
	Lead	mg/L		0	-	-	-	-	-	-
	pH	pH		0	-	-	-	-	-	-
	Standing Water Level	metres		0	-	-	-	-	-	-
11	Conductivity	µS/cm	6 monthly – (Mar- Sep)	0	-	-	-	-	-	-
	Lead	mg/L		0	-	-	-	-	-	-
	pH	pH		0	-	-	-	-	-	-
	Standing Water Level	metres		0	-	-	-	-	-	-
12	Conductivity	µS/cm	6 monthly – (Mar- Sep)	0	-	-	-	-	-	-
	Lead	mg/L		0	-	-	-	-	-	-
	pH	pH		0	-	-	-	-	-	-
	Standing Water Level	metres		0	-	-	-	-	-	-
13	Conductivity	µS/cm	Quarterly - (Feb, May, Aug, Nov)	1	05/03/2020	05/03/2020	-	-	-	2,420
	Oil & Grease	mg/L		1	05/03/2020	05/03/2020	-	-	-	<5
	pH	pH		1	05/03/2020	05/03/2020	-	-	-	8.17
	TSS	mg/L		1	05/03/2020	05/03/2020	-	-	-	380

*Note: From April 2012 to February 2019, Electrical Conductivity was reported with the incorrect unit of measure (mS/cm). From January 2019 it has been corrected to µS/cm.*

**Table 4 – Quarterly Attended Noise Monitoring.**

(Noise Limits Apply - 35dB LAeq(15min) - Day, Evening and Night; 45dB LA1(1min) - Night )

*No Noise Monitoring data reported for February*

**Table 5 – Monthly Monitoring (Blasts – Limits Apply)**

Location	Parameter	Units of Measure	Frequency	No. of Blasts for the Month	Average Value	Max Value	100%ile Limit	(Potential) Non-compliance /breach	Date of Max Value Obtained
Tarrawonga*	Blast Noise	dB (Lin Peak)	Every Blast	7	98.81	104.4	N/A	N/A	04/02/2020
	Blast Vibration	mm/s	Every Blast	7	0.26	0.55	N/A	N/A	24/02/2020
Coomalgah	Blast Noise	dB (Lin Peak)	Every Blast	7	98.11	109.2	120	Nil	26/02/2020
	Blast Vibration	mm/s	Every Blast	7	0.27	0.79	10	Nil	06/02/2020

*\*Mine owned property – no limit apply*

**Table 6- Monthly Monitoring (Dust PM10 – No Limits apply)**

Location	No. of samples required by licence	Lowest sample value	Mean of sample	Highest sample value
“Flixton” property* TEOM (µg/m <sup>3</sup> )	Continuous	0.0	24.5	324.9

*\*Mine owned property – no limit apply*

## TARRAWONGA COAL MINE – MONTHLY MONITORING SUMMARY

### Site Information

**EPL No:** 12365

**EPA Website Link:** <http://www.epa.nsw.gov.au/prpoeoapp/ViewPOEOLicence.aspx?DOCID=55113&SYSUID=1&LICID=12365>

**Licensee:** Tarrawonga Coal Pty Ltd

**Licensee Address:** Tarrawonga Coal Mine, 469 Goonbri Road, BOGGABRI NSW 2382

**EPL Monitoring Points:** See Figure 1 below

**Sampling Period:** March 2020

**Obtained Date:** 08/04/2020

**Publication Date:** 09/04/2020

**Table 1 - No Pollutant Limits Apply**

EPL ID	Pollutant	Units of Measure	Monitoring Frequency	No. of Samples for the Month	Date Sampled	Date of Max. Value Obtained	Min Value	Mean Value	Median Value	Max or Only Value	Comments
5	TSS	mg/L	Upon discharge	0	-	-	-	-	-	-	-
	Conductivity	µS/cm		0	-	-	-	-	-	-	-
	Oil & Grease	mg/L		0	-	-	-	-	-	-	-
	pH	pH		0	-	-	-	-	-	-	-
6	TSS	mg/L	Upon discharge	0	-	-	-	-	-	-	-
	Conductivity	µS/cm		0	-	-	-	-	-	-	-
	Oil & Grease	mg/L		0	-	-	-	-	-	-	-
	pH	pH		0	-	-	-	-	-	-	-

Table 2 - Pollutant Limits Apply

EPL ID	Pollutant	Units of Measure	Monitoring Frequency	No. of Samples for the Month	Date Sampled	Date of Max. Value Obtained	Min Value	Max or Only Value	100%ile Limit	Exceedance (Yes/No)	Comments
1	TSS	mg/L	Upon discharge	0	-	-	-	-	-	-	-
	Conductivity	µS/cm		0	-	-	-	-	-	-	-
	Oil & Grease	mg/L		0	-	-	-	-	-	-	-
	pH	pH		0	-	-	-	-	-	-	-
2	TSS	mg/L	Upon discharge	0	-	-	-	-	-	-	-
	Conductivity	µS/cm		0	-	-	-	-	-	-	-
	Oil & Grease	mg/L		0	-	-	-	-	-	-	-
	pH	pH		0	-	-	-	-	-	-	-
3	TSS	mg/L	Upon discharge	0	-	-	-	-	-	-	-
	Conductivity	µS/cm		0	-	-	-	-	-	-	-
	Oil & Grease	mg/L		0	-	-	-	-	-	-	-
	pH	pH		0	-	-	-	-	-	-	-
24	TSS	mg/L	Upon discharge	0	-	-	-	-	-	-	-
	Conductivity	µS/cm		0	-	-	-	-	-	-	-
	Oil & Grease	mg/L		0	-	-	-	-	-	-	-



EPL ID	Pollutant	Units of Measure	Monitoring Frequency	No. of Samples for the Month	Date Sampled	Date of Max. Value Obtained	Min Value	Max or Only Value	100%ile Limit	Exceedance (Yes/No)	Comments
	pH	pH		0	-	-	-	-	-	-	-
26	TSS	mg/L	Upon discharge	0	-	-	-	-	-	-	-
	Conductivity	µS/cm		0	-	-	-	-	-	-	-
	Oil & Grease	mg/L		0	-	-	-	-	-	-	-
	pH	pH		0	-	-	-	-	-	-	-
27	TSS	mg/L	Upon discharge	0	-	-	-	-	-	-	-
	Conductivity	µS/cm		0	-	-	-	-	-	-	-
	Oil & Grease	mg/L		0	-	-	-	-	-	-	-
	pH	pH		0	-	-	-	-	-	-	-

**Table 3 – Monitoring (Quarterly & 6 Monthly – No Limits apply)**

EPL ID	Pollutant	Units of Measure	Monitoring Frequency	No. of Samples for the Period	Date Sampled	Date of Max. Value Obtained	Min Value	Mean Value	Median Value	Max or Only Value
9	Conductivity	µS/cm	6 monthly – (Mar- Sep)	1	18/03/2020	18/03/2020	-	-	-	3,520
	Lead	mg/L		1	18/03/2020	18/03/2020	-	-	-	<0.001
	pH	pH		1	18/03/2020	18/03/2020	-	-	-	8.06
	Standing Water Level	metres		1	18/03/2020	18/03/2020	-	-	-	8.03
10	Conductivity	µS/cm	6 monthly – (Mar- Sep)	1	18/03/2020	18/03/2020	-	-	-	496
	Lead	mg/L		1	18/03/2020	18/03/2020	-	-	-	<0.001
	pH	pH		1	18/03/2020	18/03/2020	-	-	-	7.59
	Standing Water Level	metres		1	18/03/2020	18/03/2020	-	-	-	3.94
12	Conductivity	µS/cm	6 monthly – (Mar- Sep)	1	18/03/2020	18/03/2020	-	-	-	3,600
	Lead	mg/L		1	18/03/2020	18/03/2020	-	-	-	<0.001
	pH	pH		1	18/03/2020	18/03/2020	-	-	-	7.74
	Standing Water Level	metres		1	18/03/2020	18/03/2020	-	-	-	11.08
13	Conductivity	µS/cm	Quarterly - (Feb, May, Aug, Nov)	0	-	-	-	-	-	-
	Oil & Grease	mg/L		0	-	-	-	-	-	-
	pH	pH		0	-	-	-	-	-	-
	TSS	mg/L		0	-	-	-	-	-	-

Note: From April 2012 to February 2019, Electrical Conductivity was reported with the incorrect unit of measure (mS/cm). From January 2019 it has been corrected to µS/cm.

**Table 4 – Quarterly Attended Noise Monitoring.**

(Noise Limits Apply - 35dB LAeq(15min) - Day, Evening and Night; 45dB LA1(1min) - Night )

(Extract from consultants' report for the quarter)

Date	Time	Total Noise Levels (dB)						Mine LAeq Noise Level (dB)	Wind Speed (m/s)	Wind Direction	Stability Category	Rain (mm)
		LAeq	LAmax	LAmin	LA1	LA10	LA90					
<b>Matong/ Coomalgah - TN2</b>												
<b>02/03/2020</b>	10:04	41	64	31	55	39	33	36	1	136	A	0
	10:20	35	53	28	45	36	30	33	1	189	A	0
	10:33	37	65	28	45	37	30	32	1.5	214	C	0
	10:50	34	57	27	41	38	30	30	1.8	238	A	0
	11:05	33	59	26	41	34	28	29	1.5	262	A	0
	11:21	36	56	28	46	38	31	28	3.8	283	B	0
	21:32	36	42	30	41	38	33	<30	0.8	22	F	0
	21:45	37	46	27	42	39	33	<30	0.3	9	F	0
	22:00	36	44	28	41	38	32	33	1	2	F	0
	22:15	38	45	30	42	39	34	<30	0.7	334	F	0
	22:30	40	49	31	45	42	35	<30	0.9	38	D	0
22:45	39	45	32	43	41	36	<30	1.6	24	D	0	
<b>03/03/2020</b>	10:50	37	53	29	46	39	31	31	3.8	155	D	0
	11:06	38	65	28	50	37	30	<30	4.3	160	D	0
	11:22	36	55	29	46	39	31	<30	4.1	176	D	0
	11:37	36	55	29	44	38	32	30	4.2	162	D	0
	11:53	39	55	30	47	42	33	<30	3.8	147	D	0
	12:09	40	53	33	48	44	35	<30	4.2	154	C	0

	21:29	31	41	25	36	33	28	I/A	1.3	266	D	0
	21:46	36	52	31	42	38	33	I/A	1.1	267	E	0
	22:01	36	49	28	42	38	32	<30	1.7	237	F	0
	22:17	32	41	26	37	35	29	<30	1.8	221	F	0
	22:32	31	51	25	37	32	28	<28	2.5	227	D	0
	22:47	34	55	25	40	37	28	<28	1.8	224	D	0
<b>04/03/2020</b>	11:42	34	51	26	41	36	29	I/A	2.6	13	A	0
	11:53	40	57	24	49	46	28	<25	2.9	26	A	0
	12:09	36	58	24	49	37	27	<25	2.4	26	A	0
	12:24	35	54	24	45	38	26	<25	1.6	59	A	0
	12:39	36	58	23	48	38	26	<25	1.4	20	A	0
	12:55	34	57	22	43	39	24	<25	2.7	49	A	0
	21:31	42	50	31	49	47	35	<30	1.8	35	F	0
	21:45	37	47	30	42	39	33	<30	2.6	34	E	0
	22:01	40	53	32	47	43	35	<30	3	35	D	0
	22:16	43	55	32	50	46	37	I/A	3.5	34	D	0
	22:31	46	68	33	55	46	38	I/A	4	31	D	0
	22:46	47	62	37	55	50	42	I/A	4	34	D	0
<b>05/03/2020</b>	12:03	51	65	39	59	54	42	I/A	5.2	17	C	0
	12:14	48	65	37	56	52	42	I/A	4.9	14	C	0
	12:31	53	68	39	62	56	44	I/A	4.4	15	C	0
	12:48	47	63	36	55	50	40	I/A	4.1	7	C	0
	13:03	48	66	39	58	51	41	I/A	3.8	2	B	0.6
	21:21	41	54	33	46	44	37	<33	3.9	5	D	0
	21:36	41	53	33	47	44	36	<33	3	16	E	0
	22:02	46	59	39	53	48	41	<33	3.4	20	D	0
	22:18	46	61	35	54	49	40	<35	2.7	23	F	0

	22:33	48	64	39	57	51	42	<35	3.3	20	E	0
	22:48	49	63	39	57	52	43	<35	4	18	D	0
	21:21	41	54	33	46	44	37	<33	3.9	5	D	0
<b>Barbers Lagoon - TN3</b>												
<b>02/03/2020</b>	14:17	43	62	29	52	47	33	I/A	3.6	248	B	0
	14:32	37	54	28	45	41	30	I/A	4.2	265	C	0
	14:46	40	55	24	50	42	29	I/A	1.9	292	A	0
	15:01	36	62	25	44	40	27	I/A	2.5	294	A	0
	15:18	39	55	26	47	42	29	I/A	2.8	261	B	0
	15:32	40	69	26	48	43	32	I/A	2.5	257	B	0
	18:58	39	58	25	49	42	29	< 30	1.8	301	D	0
	19:13	42	63	25	54	42	28	I/A	1	328	C	0
	00:54	39	70	30	46	40	33	I/A	3.1	282	D	0
	01:09	38	50	30	46	41	33	I/A	3.6	278	D	0
	01:24	39	51	33	45	42	35	I/A	4.6	273	D	0
01:39	39	47	33	43	41	36	I/A	3.6	257	D	0	
<b>03/03/2020</b>	09:10	41	66	31	52	42	34	34	3.1	131	C	0
	09:25	44	68	33	55	45	37	34	3.3	147	C	0
	09:41	42	59	35	51	44	38	<35	3.6	137	C	0
	09:57	43	67	33	51	45	37	<33	4.3	136	D	0
	10:13	45	69	34	54	48	38	<33	4.5	133	D	0
	10:28	44	55	40	50	46	41	<30	4.3	134	D	0
	19:20	47	69	39	57	50	42	I/A	3.6	165	D	0
	19:35	55	82	38	69	48	41	I/A	3.2	162	D	0
	01:00	34	52	30	36	35	32	33	3.8	110	D	0
	01:15	33	41	30	35	34	32	32	3.4	115	D	0
01:30	34	44	30	37	35	32	32	1	104	F	0	

	01:45	33	41	30	35	34	31	32	1.2	92	F	0
<b>04/03/2020</b>	10:03	40	52	30	48	44	32	I/A	2.9	64	C	0
	10:11	42	60	27	51	45	31	30	3.6	67	C	0
	10:26	43	61	31	53	46	35	I/A	2.9	67	C	0
	10:42	40	55	26	49	44	30	<30	2.7	58	A	0
	10:58	44	65	27	57	46	31	<30	3.1	66	C	0
	11:13	39	58	29	48	43	32	I/A	2.7	49	A	0
	19:30	40	66	33	50	42	35	I/A	3.3	18	B	0
	19:45	42	73	31	49	41	32	I/A	2.8	19	A	0
	00:55	37	70	30	42	36	32	<30	2.1	29	F	0
	01:10	36	53	30	43	38	33	<30	2.3	24	F	0
	01:25	36	48	32	42	38	33	<30	2.5	20	F	0
	01:40	37	54	33	43	39	34	<30	2.4	31	E	0
<b>05/03/2020</b>	11:49	64	95	33	71	51	38	I/A	6.1	22	D	0
	12:06	47	73	35	54	49	39	I/A	5.2	17	C	0
	12:21	46	60	35	53	48	39	I/A	4.9	14	C	0
	12:36	49	62	43	54	51	45	I/A	4.4	15	C	0
	14:11	40	62	31	50	42	33	32	1.5	45	B	0
	14:26	41	57	30	51	44	33	32	1.4	39	A	0
	20:02	36	58	32	38	36	34	33	3.1	20	B	0
	20:17	36	48	32	40	37	34	33	2.6	28	A	0
	23:43	41	50	38	46	43	39	<30	2.2	259	D	0
	00:10	38	55	35	41	40	37	<35	5.1	307	D	0.2
	00:25	38	47	35	42	40	37	<35	4.5	294	D	0
12:06	47	73	35	54	49	39	I/A	5.2	17	C	0	
<b>Bungalow - TN4</b>												
<b>02/03/2020</b>	12:10	46	65	38	54	49	41	I/A	5.3	281	C	0

	12:25	45	66	37	52	48	40	I/A	3.7	289	B	0
	12:42	46	67	37	54	49	40	I/A	4.4	284	C	0
	12:58	47	66	38	54	51	41	I/A	4.5	273	C	0
	13:16	42	62	33	49	45	37	I/A	4.6	265	C	0
	13:32	41	56	28	49	45	35	I/A	4.2	247	C	0
	20:39	39	52	36	41	40	38	I/A	2	24	E	0
	20:52	38	40	35	39	39	37	I/A	1.8	16	E	0
	23:27	36	42	33	40	39	34	I/A	1.7	10	F	0
	23:43	37	43	33	41	40	35	I/A	1.5	21	E	0
	23:58	36	40	32	39	38	34	I/A	1.4	21	F	0
	00:13	36	41	32	40	38	34	I/A	1.5	357	F	0
<b>03/03/2020</b>	12:50	52	59	45	57	54	48	I/A	6	135	D	0
	13:07	48	58	40	56	51	44	I/A	5.6	141	D	0
	13:22	54	61	45	59	57	49	I/A	5.6	131	D	0
	13:39	56	65	49	62	59	52	I/A	5.6	137	D	0
	13:55	53	60	45	58	55	48	I/A	5.5	149	C	0
	14:10	54	63	46	61	58	47	I/A	5.2	154	D	0
	20:43	45	53	39	49	47	42	I/A	2.1	146	D	0
	20:52	46	53	41	51	48	43	I/A	0.6	130	F	0
	23:22	40	49	36	45	42	37	<30	1.2	215	D	0
	23:37	37	47	33	41	39	35	<30	0.8	180	F	0
	23:53	36	41	33	39	37	35	<30	1.5	93	F	0
	00:09	36	53	32	39	37	34	<30	0.6	252	F	0
<b>04/03/2020</b>	13:35	38	53	29	47	41	33	I/A	3.1	58	B	0
	14:01	39	49	30	46	42	34	I/A	2.2	16	A	0
	14:16	41	54	31	49	45	34	I/A	2	35	A	0
	14:32	41	56	27	50	45	31	I/A	1.9	54	A	0

	14:49	36	61	27	46	37	29	I/A	2.1	48	A	0
	15:06	38	51	30	46	42	32	I/A	3.2	58	B	0
	20:50	42	50	38	46	43	39	I/A	2.8	32	E	0
	21:00	41	45	38	43	42	39	I/A	2.1	20	F	0
	23:22	46	53	39	51	48	41	I/A	3.7	31	D	0
	23:38	46	57	37	53	50	40	I/A	4	40	D	0
	23:53	45	53	36	51	48	39	I/A	3.7	26	D	0
	00:09	41	46	34	44	43	38	I/A	2.6	46	E	0
<b>05/03/2020</b>	14:30	49	76	30	60	45	34	34	1.4	39	A	0
	14:45	57	79	30	71	54	32	33	0.5	224	A	0
	21:16	47	70	43	50	48	45	I/A	3.9	5	D	0
	21:30	47	53	42	50	49	44	I/A	3	16	E	0
	22:01	39	54	31	44	42	35	I/A	3.4	20	D	0
	22:16	46	54	36	52	48	39	I/A	2.7	23	F	0
	22:31	46	55	39	52	48	42	I/A	3.3	20	E	0
	22:46	46	52	38	49	47	43	I/A	4	18	D	0

Notes:

- Acronyms used: I/A = Inaudible, m/s = metres/second, dB = decibel.
- Coloured Cells = Noise Criteria do not apply for any following weather conditions:
  - a) Wind speeds greater than 3m/s at 10m above ground level
  - b) Stability Category F temperature inversion conditions and wind speeds greater than 2m/s, 10m above the ground
  - c) Stability category G temperature inversions.



Attended noise monitoring was conducted at the “Bungalow” (TN4), “Barbers Lagoon” (TN3) and “Matong” (TN2) properties from 2<sup>nd</sup> to the 5<sup>th</sup> of March 2020. The summary table (Table 4) displays a comprehensive results table displaying all measurements. The noise criterion for the mine is 35dB(A) Leq (15 min) for all operating times.

Noise from the mine must not exceed 45 dB(A) L1 (1 min) between 10 pm and 7 am. This is to minimise the potential for sleep disturbance as a result of individual loud noises from the mine. The results of the sleep disturbance monitoring show that the measured L1 (1 min) noise level did not exceed the sleep disturbance criterion.

The results above show that noise emissions from the mine did not exceed the operational noise criterion at the “Barbers Lagoon”, “Bungalow” or “Matong” monitoring locations during the entire monitoring period.

**Table 5 – Monthly Monitoring (Blasts – Limits Apply)**

Location	Parameter	Units of Measure	Frequency	No. of Blasts for the Month	Average Value	Max Value	100%ile Limit	(Potential) Non-compliance /breach	Date of Max Value Obtained
Coomalgah	Blast Noise	dB (Lin Peak)	Every Blast	6	103.9	118.4*	120	Nil	20/03/2020
	Blast Vibration	mm/s	Every Blast	6	0.4	1.06	10	Nil	20/03/2020

\*Overpressure exceedance (>115dB) but in accordance with PA11\_0047, EPL12365 and MLs since it was the second exceedance at privately owned property (Coomalgah) over 83 blast in 12 months (~2.4% <5% allowed by approvals above) - Not reported to agencies

**Table 6- Monthly Monitoring (Dust PM10 – No Limits apply)**

Location	No. of samples required by licence	Lowest sample value	Mean of sample	Highest sample value
“Flixton” property* TEOM (µg/m <sup>3</sup> )	Continuous	0	15.3	305.5

\*Mine owned property – no limit apply

## TARRAWONGA COAL MINE – MONTHLY MONITORING SUMMARY

### Site Information

**EPL No:** 12365

**EPA Website Link:** <http://www.epa.nsw.gov.au/prpoeoapp/ViewPOEOLicence.aspx?DOCID=55113&SYSUID=1&LICID=12365>

**Licensee:** Tarrawonga Coal Pty Ltd

**Licensee Address:** Tarrawonga Coal Mine, 469 Goonbri Road, BOGGABRI NSW 2382

**EPL Monitoring Points:** See Figure 1 below

**Sampling Period:** April 2020

**Obtained Date:** 05/05/2020

**Publication Date:** 11/05/2020

**Table 1 - No Pollutant Limits Apply**

EPL ID	Pollutant	Units of Measure	Monitoring Frequency	No. of Samples for the Month	Date Sampled	Date of Max. Value Obtained	Min Value	Mean Value	Median Value	Max or Only Value	Comments
5	TSS	mg/L	Upon discharge	0	-	-	-	-	-	-	-
	Conductivity	µS/cm		0	-	-	-	-	-	-	-
	Oil & Grease	mg/L		0	-	-	-	-	-	-	-
	pH	pH		0	-	-	-	-	-	-	-
6	TSS	mg/L	Upon discharge	0	-	-	-	-	-	-	-
	Conductivity	µS/cm		0	-	-	-	-	-	-	-
	Oil & Grease	mg/L		0	-	-	-	-	-	-	-
	pH	pH		0	-	-	-	-	-	-	-

Table 2 - Pollutant Limits Apply

EPL ID	Pollutant	Units of Measure	Monitoring Frequency	No. of Samples for the Month	Date Sampled	Date of Max. Value Obtained	Min Value	Max or Only Value	100%ile Limit	Exceedance (Yes/No)	Comments
1	TSS	mg/L	Upon discharge	0	-	-	-	-	-	-	-
	Conductivity	µS/cm		0	-	-	-	-	-	-	-
	Oil & Grease	mg/L		0	-	-	-	-	-	-	-
	pH	pH		0	-	-	-	-	-	-	-
2	TSS	mg/L	Upon discharge	0	-	-	-	-	-	-	-
	Conductivity	µS/cm		0	-	-	-	-	-	-	-
	Oil & Grease	mg/L		0	-	-	-	-	-	-	-
	pH	pH		0	-	-	-	-	-	-	-
3	TSS	mg/L	Upon discharge	0	-	-	-	-	-	-	-
	Conductivity	µS/cm		0	-	-	-	-	-	-	-
	Oil & Grease	mg/L		0	-	-	-	-	-	-	-
	pH	pH		0	-	-	-	-	-	-	-
24	TSS	mg/L	Upon discharge	0	-	-	-	-	-	-	-
	Conductivity	µS/cm		0	-	-	-	-	-	-	-
	Oil & Grease	mg/L		0	-	-	-	-	-	-	-
	pH	pH		0	-	-	-	-	-	-	-
26	TSS	mg/L	Upon	0	-	-	-	-	-	-	-

EPL ID	Pollutant	Units of Measure	Monitoring Frequency	No. of Samples for the Month	Date Sampled	Date of Max. Value Obtained	Min Value	Max or Only Value	100%ile Limit	Exceedance (Yes/No)	Comments
	Conductivity	μS/cm	discharge	0	-	-	-	-	-	-	-
	Oil & Grease	mg/L		0	-	-	-	-	-	-	-
	pH	pH		0	-	-	-	-	-	-	-
27	TSS	mg/L	Upon discharge	0	-	-	-	-	-	-	-
	Conductivity	μS/cm		0	-	-	-	-	-	-	-
	Oil & Grease	mg/L		0	-	-	-	-	-	-	-
	pH	pH		0	-	-	-	-	-	-	-

**Table 3 – Monitoring (Quarterly & 6 Monthly – No Limits apply)**

EPL ID	Pollutant	Units of Measure	Monitoring Frequency	No. of Samples for the Period	Date Sampled	Date of Max. Value Obtained	Min Value	Mean Value	Median Value	Max or Only Value
9	Conductivity	µS/cm	6 monthly – (Mar- Sep)	0	-	-	-	-	-	-
	Lead	mg/L		0	-	-	-	-	-	-
	pH	pH		0	-	-	-	-	-	-
	Standing Water Level	metres		0	-	-	-	-	-	-
10	Conductivity	µS/cm	6 monthly – (Mar- Sep)	0	-	-	-	-	-	-
	Lead	mg/L		0	-	-	-	-	-	-
	pH	pH		0	-	-	-	-	-	-
	Standing Water Level	metres		0	-	-	-	-	-	-
12	Conductivity	µS/cm	6 monthly – (Mar- Sep)	0	-	-	-	-	-	-
	Lead	mg/L		0	-	-	-	-	-	-
	pH	pH		0	-	-	-	-	-	-
	Standing Water Level	metres		0	-	-	-	-	-	-
13	Conductivity	µS/cm	Quarterly - (Feb, May, Aug, Nov)	0	-	-	-	-	-	-
	Oil & Grease	mg/L		0	-	-	-	-	-	-
	pH	pH		0	-	-	-	-	-	-
	TSS	mg/L		0	-	-	-	-	-	-

*Note: From April 2012 to February 2019, Electrical Conductivity was reported with the incorrect unit of measure (mS/cm). From January 2019 it has been corrected to µS/cm.*

**Table 4 – Quarterly Attended Noise Monitoring.**

(Noise Limits Apply - 35dB LAeq(15min) - Day, Evening and Night; 45dB LA1(1min) - Night )

*No Noise Monitoring data reported for April*

**Table 5 – Monthly Monitoring (Blasts – Limits Apply)**

Location	Parameter	Units of Measure	Frequency	No. of Blasts for the Month	Average Value	Max Value	100%ile Limit	(Potential) Non-compliance /breach	Date of Max Value Obtained
Coomalgah	Blast Noise	dB (Lin Peak)	Every Blast	10	93.95	100.2	120	Nil	23/04/2020
(TB2)	Blast Vibration	mm/s	Every Blast	10	0.24	0.56	10	Nil	08/04/2020

**Table 6- Monthly Monitoring (Dust PM10 – No Limits apply)**

Location	No. of samples required by licence	Lowest sample value	Mean of sample	Highest sample value
“Flixton” property* TEOM (µg/m <sup>3</sup> )	Continuous	0	18.9	201.4

*\*Mine owned property – no limit apply*



## TARRAWONGA COAL MINE – MONTHLY MONITORING SUMMARY

### Site Information

**EPL No:** 12365

**EPA Website Link:** <http://www.epa.nsw.gov.au/prpoeoapp/ViewPOEOLicence.aspx?DOCID=55113&SYSUID=1&LICID=12365>

**Licensee:** Tarrawonga Coal Pty Ltd

**Licensee Address:** Tarrawonga Coal Mine, 469 Goonbri Road, BOGGABRI NSW 2382

**EPL Monitoring Points:** See Figure 1 below

**Sampling Period:** May 2020

**Obtained Date:** 10/06/2020

**Publication Date:** 10/06/2020

**Table 1 - No Pollutant Limits Apply**

EPL ID	Pollutant	Units of Measure	Monitoring Frequency	No. of Samples for the Month	Date Sampled	Date of Max. Value Obtained	Min Value	Mean Value	Median Value	Max or Only Value	Comments
5	TSS	mg/L	Upon discharge	0	-	-	-	-	-	-	-
	Conductivity	µS /cm		0	-	-	-	-	-	-	-
	Oil & Grease	mg/L		0	-	-	-	-	-	-	-
	pH	pH		0	-	-	-	-	-	-	-
6	TSS	mg/L	Upon discharge	0	-	-	-	-	-	-	-
	Conductivity	µS /cm		0	-	-	-	-	-	-	-
	Oil & Grease	mg/L		0	-	-	-	-	-	-	-
	pH	pH		0	-	-	-	-	-	-	-

Table 2 - Pollutant Limits Apply

EPL ID	Pollutant	Units of Measure	Monitoring Frequency	No. of Samples for the Month	Date Sampled	Date of Max. Value Obtained	Min Value	Max or Only Value	100%ile Limit	Exceedance (Yes/No)	Comments
1	TSS	mg/L	Upon discharge	0	-	-	-	-	-	-	-
	Conductivity	µS/cm		0	-	-	-	-	-	-	-
	Oil & Grease	mg/L		0	-	-	-	-	-	-	-
	pH	pH		0	-	-	-	-	-	-	-
2	TSS	mg/L	Upon discharge	0	-	-	-	-	-	-	-
	Conductivity	µS/cm		0	-	-	-	-	-	-	-
	Oil & Grease	mg/L		0	-	-	-	-	-	-	-
	pH	pH		0	-	-	-	-	-	-	-
3	TSS	mg/L	Upon discharge	0	-	-	-	-	-	-	-
	Conductivity	µS/cm		0	-	-	-	-	-	-	-
	Oil & Grease	mg/L		0	-	-	-	-	-	-	-
	pH	pH		0	-	-	-	-	-	-	-
24	TSS	mg/L	Upon discharge	0	-	-	-	-	-	-	-
	Conductivity	µS/cm		0	-	-	-	-	-	-	-
	Oil & Grease	mg/L		0	-	-	-	-	-	-	-

EPL ID	Pollutant	Units of Measure	Monitoring Frequency	No. of Samples for the Month	Date Sampled	Date of Max. Value Obtained	Min Value	Max or Only Value	100%ile Limit	Exceedance (Yes/No)	Comments
	pH	pH		0	-	-	-	-	-	-	-
26	TSS	mg/L	Upon discharge	0	-	-	-	-	-	-	-
	Conductivity	µS/cm		0	-	-	-	-	-	-	-
	Oil & Grease	mg/L		0	-	-	-	-	-	-	-
	pH	pH		0	-	-	-	-	-	-	-
27	TSS	mg/L	Upon discharge	0	-	-	-	-	-	-	-
	Conductivity	µS/cm		0	-	-	-	-	-	-	-
	Oil & Grease	mg/L		0	-	-	-	-	-	-	-
	pH	pH		0	-	-	-	-	-	-	-

**Table 3 – Monitoring (Quarterly & 6 Monthly – No Limits apply)**

EPL ID	Pollutant	Units of Measure	Monitoring Frequency	No. of Samples for the Period	Date Sampled	Date of Max. Value Obtained	Min Value	Mean Value	Median Value	Max or Only Value
9	Conductivity	µS /cm	6 monthly – (Mar- Sep)	0	-	-	-	-	-	-
	Lead	mg/L		0	-	-	-	-	-	-
	pH	pH		0	-	-	-	-	-	-
	Standing Water Level	metres		0	-	-	-	-	-	-
10	Conductivity	µS /cm	6 monthly – (Mar- Sep)	0	-	-	-	-	-	-
	Lead	mg/L		0	-	-	-	-	-	-
	pH	pH		0	-	-	-	-	-	-
	Standing Water Level	metres		0	-	-	-	-	-	-
12	Conductivity	µS /cm	6 monthly – (Mar- Sep)	0	-	-	-	-	-	-
	Lead	mg/L		0	-	-	-	-	-	-
	pH	pH		0	-	-	-	-	-	-
	Standing Water Level	metres		0	-	-	-	-	-	-
13	Conductivity	µS/cm	Quarterly - (Feb, May, Aug, Nov)	1	06/05/2020	06/05/2020	-	-	-	3,290
	Oil & Grease	mg/L		1	06/05/2020	06/05/2020	-	-	-	<5
	pH	pH		1	06/05/2020	06/05/2020	-	-	-	7.8
	TSS	mg/L		1	06/05/2020	06/05/2020	-	-	-	34

Note: From April 2012 to February 2019, Electrical Conductivity was reported with the incorrect unit of measure (mS/cm). From January 2019 it has been corrected to µS/cm.

**Table 4 – Quarterly Attended Noise Monitoring.**

(Noise Limits Apply - 35dB LAeq(15min) - Day, Evening and Night; 45dB LA1(1min) - Night )

*No Noise Monitoring data reported for May*

**Table 5 – Monthly Monitoring (Blasts – Limits Apply)**

Location	Parameter	Units of Measure	Frequency	No. of Blasts for the Month	Average Value	Max Value	100%ile Limit	(Potential) Non-compliance /breach	Date of Max Value Obtained
Coomalgah	Blast Noise	dB (Lin Peak)	Every Blast	10	90.15	105.60	120	Nil	11/05/2020
(TB2)	Blast Vibration	mm/s	Every Blast	10	0.25	0.92	10	Nil	20/05/2020

**Table 6- Monthly Monitoring (Dust PM10 – No Limits apply)**

Location	No. of samples required by licence	Lowest sample value	Mean of sample	Highest sample value
“Flixton” property* TEOM (µg/m <sup>3</sup> )	Continuous	0	11.63	147.6

*\*Mine owned property – no limit apply*

## TARRAWONGA COAL MINE – MONTHLY MONITORING SUMMARY

### Site Information

**EPL No:** 12365

**EPA Website Link:** <http://www.epa.nsw.gov.au/prpoeoapp/ViewPOEOLicence.aspx?DOCID=55113&SYSUID=1&LICID=12365>

**Licensee:** Tarrawonga Coal Pty Ltd

**Licensee Address:** Tarrawonga Coal Mine, 469 Goonbri Road, BOGGABRI NSW 2382

**EPL Monitoring Points:** See Figure 1 below

**Sampling Period:** June 2020

**Obtained Date:** 10/07/2020

**Publication Date:** 13/07/2020

**Table 1 - No Pollutant Limits Apply**

EPL ID	Pollutant	Units of Measure	Monitoring Frequency	No. of Samples for the Month	Date Sampled	Date of Max. Value Obtained	Min Value	Mean Value	Median Value	Max or Only Value	Comments
5	TSS	mg/L	Upon discharge	0	-	-	-	-	-	-	-
	Conductivity	µS/cm		0	-	-	-	-	-	-	-
	Oil & Grease	mg/L		0	-	-	-	-	-	-	-
	pH	pH		0	-	-	-	-	-	-	-
6	TSS	mg/L	Upon discharge	0	-	-	-	-	-	-	-
	Conductivity	µS/cm		0	-	-	-	-	-	-	-
	Oil & Grease	mg/L		0	-	-	-	-	-	-	-
	pH	pH		0	-	-	-	-	-	-	-

Table 2 - Pollutant Limits Apply

EPL ID	Pollutant	Units of Measure	Monitoring Frequency	No. of Samples for the Month	Date Sampled	Date of Max. Value Obtained	Min Value	Max or Only Value	100%ile Limit	Exceedance (Yes/No)	Comments
1	TSS	mg/L	Upon discharge	0	-	-	-	-	-	-	-
	Conductivity	μS/cm		0	-	-	-	-	-	-	-
	Oil & Grease	mg/L		0	-	-	-	-	-	-	-
	pH	pH		0	-	-	-	-	-	-	-
2	TSS	mg/L	Upon discharge	0	-	-	-	-	-	-	-
	Conductivity	μS/cm		0	-	-	-	-	-	-	-
	Oil & Grease	mg/L		0	-	-	-	-	-	-	-
	pH	pH		0	-	-	-	-	-	-	-
3	TSS	mg/L	Upon discharge	0	-	-	-	-	-	-	-
	Conductivity	μS/cm		0	-	-	-	-	-	-	-
	Oil & Grease	mg/L		0	-	-	-	-	-	-	-
	pH	pH		0	-	-	-	-	-	-	-
24	TSS	mg/L	Upon discharge	0	-	-	-	-	-	-	-
	Conductivity	μS/cm		0	-	-	-	-	-	-	-
	Oil & Grease	mg/L		0	-	-	-	-	-	-	-



EPL ID	Pollutant	Units of Measure	Monitoring Frequency	No. of Samples for the Month	Date Sampled	Date of Max. Value Obtained	Min Value	Max or Only Value	100%ile Limit	Exceedance (Yes/No)	Comments
	pH	pH		0	-	-	-	-	-	-	-
26	TSS	mg/L	Upon discharge	0	-	-	-	-	-	-	-
	Conductivity	µS/cm		0	-	-	-	-	-	-	-
	Oil & Grease	mg/L		0	-	-	-	-	-	-	-
	pH	pH		0	-	-	-	-	-	-	-
27	TSS	mg/L	Upon discharge	0	-	-	-	-	-	-	-
	Conductivity	µS/cm		0	-	-	-	-	-	-	-
	Oil & Grease	mg/L		0	-	-	-	-	-	-	-
	pH	pH		0	-	-	-	-	-	-	-

**Table 3 – Monitoring (Quarterly & 6 Monthly – No Limits apply)**

EPL ID	Pollutant	Units of Measure	Monitoring Frequency	No. of Samples for the Period	Date Sampled	Date of Max. Value Obtained	Min Value	Mean Value	Median Value	Max or Only Value
9	Conductivity	µS/cm	6 monthly – (Mar- Sep)	0	-	-	-	-	-	-
	Lead	mg/L		0	-	-	-	-	-	-
	pH	pH		0	-	-	-	-	-	-
	Standing Water Level	metres		0	-	-	-	-	-	-
10	Conductivity	µS/cm	6 monthly – (Mar- Sep)	0	-	-	-	-	-	-
	Lead	mg/L		0	-	-	-	-	-	-
	pH	pH		0	-	-	-	-	-	-
	Standing Water Level	metres		0	-	-	-	-	-	-
12	Conductivity	µS/cm	6 monthly – (Mar- Sep)	0	-	-	-	-	-	-
	Lead	mg/L		0	-	-	-	-	-	-
	pH	pH		0	-	-	-	-	-	-
	Standing Water Level	metres		0	-	-	-	-	-	-
13	Conductivity	µS/cm	Quarterly - (Feb, May, Aug, Nov)	0	-	-	-	-	-	-
	Oil & Grease	mg/L		0	-	-	-	-	-	-
	pH	pH		0	-	-	-	-	-	-
	TSS	mg/L		0	-	-	-	-	-	-

Note: From April 2012 to February 2019, Electrical Conductivity was reported with the incorrect unit of measure (mS/cm). From January 2019 it has been corrected to µS/cm.

**Table 4 – Quarterly Attended Noise Monitoring.**

(Noise Limits Apply - 35dB LAeq(15min) - Day, Evening and Night; 45dB LA1(1min) - Night )

(Extracts from consultants' report for the quarter)

Date	Time	Total Noise Levels (dB)						Mine LAeq Noise Level (dB)	Wind Speed (m/s)	Wind Direction	Stability Category	Rain (mm)
		LA eq	LA max	LA min	LA1	LA10	LA90					
<b>TN2</b>												
<b>09/06/2020</b>	10:35	36	60	18	50	34	20	20	1.8	109	B	0
	10:50	31	54	19	41	33	21	22	1.7	137	A	0
	11:05	32	60	19	43	34	21	21	3.2	160	C	0
	11:22	34	61	20	45	34	21	21	3.3	146	C	0
	11:38	32	54	19	44	32	21	21	3.8	146	C	0
	11:53	32	52	22	43	33	24	<24	3.8	144	C	0
	21:21	39	51	19	45	43	23	22	1	227	F	0
	21:39	38	63	18	45	43	19	22	1.3	239	E	0
	22:00	20	42	16	31	20	17	<20	0.6	267	F	0
	22:16	20	45	16	28	21	17	<20	0.4	163	F	0
	22:31	23	53	16	28	20	17	<20	1	264	F	0
22:46	26	59	16	30	19	16	<20	0	NaN	Z	0	
<b>10/06/2020</b>	10:03	35	55	27	48	36	29	<19 (I/A)	1.5	165	A	0
	10:19	31	47	26	37	33	28	<18 (I/A)	2	130	A	0
	10:35	41	77	25	47	33	27	<17 (I/A)	2.7	120	D	0
	10:51	40	69	26	52	37	29	<19 (I/A)	3.3	130	D	0

	11:06	39	66	28	49	36	30	<20 (I/A)	3.5	121	C	0
	11:22	39	59	28	50	42	30	<20 (I/A)	3.4	121	C	0
	21:20	24	52	16	34	26	17	17	1.5	37	E	0
	21:36	20	44	16	31	20	16	<20	1	23	F	0
	22:00	19	42	16	28	19	16	19	0	NaN	Z	0
	22:15	22	49	16	31	22	17	22	0.7	93	F	0
	22:31	24	56	16	30	21	17	24	0.8	49	E	0
	22:47	24	51	16	31	21	16	23	1.2	48	D	0
<b>11/06/2020</b>	09:49	38	59	20	50	39	24	<14 (I/A)	0.6	187	A	0
	10:04	33	62	21	43	35	23	<25	1.2	221	B	0
	10:20	38	63	20	51	40	22	<25	1.9	218	C	0
	10:36	36	61	20	50	34	22	<25	2	220	C	0
	10:50	33	61	20	44	29	22	<25	1.5	223	A	0
	11:05	30	53	19	41	31	21	<22	1.1	214	A	0
	20:35	28	63	16	33	23	16	<6 (I/A)	1.3	28	D	0
	20:53	20	42	16	30	21	16	<6 (I/A)	1.1	34	D	0
	23:27	26	60	16	33	25	17	<22	0.6	343	F	0
	23:43	20	48	16	28	21	16	20	0	NaN	Z	0
	23:58	19	45	16	28	20	16	19	0	NaN	Z	0
	00:14	20	42	16	30	19	16	20	0.7	63	D	0
<b>12/06/2020</b>	10:10	43	66	24	57	41	27	<17 (I/A)	1.4	165	A	0
	10:26	38	63	26	48	38	29	<19 (I/A)	1.6	156	A	0
	10:49	32	51	23	44	33	25	<15 (I/A)	1.6	165	A	0
	11:04	29	50	22	38	30	24	<22	2.1	180	A	0
	11:20	26	48	21	32	27	22	22	1.6	190	A	0
	11:37	30	53	21	43	30	22	22	1.5	182	A	0
	21:30	22	50	17	24	21	17	<7 (I/A)	1.2	67	E	0

	21:45	20	40	17	25	22	18	<8 (I/A)	1	39	F	0
	22:00	28	60	17	34	22	18	28	0.7	22	F	0
	22:15	26	36	19	31	29	21	26	0.5	17	F	0
	22:30	28	44	23	33	29	26	28	0.8	34	F	0
	22:45	28	35	22	32	29	25	28	0.7	56	F	0
<b>TN3</b>												
<b>09/06/2020</b>	14:19	38	60	24	48	43	27	<25	4.6	104	C	0
	14:34	43	62	26	56	44	31	<21 (I/A)	4	107	C	0
	14:51	37	58	23	48	40	27	<17 (I/A)	3.9	100	C	0
	15:07	42	58	30	53	45	33	<23 (I/A)	3.1	109	B	0
	15:22	40	68	27	50	43	29	<19 (I/A)	3.2	105	C	0
	15:37	44	57	30	55	47	32	<22 (I/A)	3.1	120	C	0
	19:22	32	47	28	38	33	30	32	0	NaN	Z	0
	19:37	34	55	29	39	35	31	33	0	NaN	Z	0
	00:43	35	64	29	39	35	32	33	0	NaN	Z	0
	00:59	34	60	29	37	36	32	34	0	NaN	Z	0
	01:15	35	59	30	39	36	33	34	0.6	72	D	0
01:31	33	47	29	36	34	31	33	1	68	F	0	
<b>10/06/2020</b>	09:27	40	67	31	50	41	34	33	1.5	213	B	0
	09:42	41	68	30	51	43	34	34	1.6	184	C	0
	09:57	40	57	32	49	42	34	34	1.5	165	A	0
	10:12	42	63	31	53	44	35	35	2	130	A	0
	10:27	38	55	29	48	41	32	33	2.7	120	D	0
	10:42	39	63	29	50	40	32	32	3.3	130	D	0
	19:17	27	54	18	34	25	20	27	1.1	41	D	0
	19:32	29	58	19	40	29	21	29	1	355	F	0
00:50	32	56	27	35	32	29	32	0.7	28	D	0	

	01:05	31	42	26	35	33	29	33	0	NaN	Z	0
	01:20	32	43	28	35	34	31	33	0	NaN	Z	0
	01:35	33	40	27	36	34	30	33	0	NaN	Z	0
<b>11/06/2020</b>	13:45	38	60	21	49	41	25	<15 (I/A)	2.3	201	A	0
	14:02	38	68	21	47	43	26	<16 (I/A)	1.2	170	A	0
	14:21	48	74	20	62	43	24	<14 (I/A)	1.4	175	A	0
	14:36	43	64	20	57	45	24	<14 (I/A)	1.3	144	A	0
	14:51	37	61	20	51	38	24	<14 (I/A)	1.6	172	A	0
	15:06	34	51	20	46	37	22	<12 (I/A)	1.3	170	A	0
	19:34	27	54	17	37	30	18	<8 (I/A)	1.3	42	D	0
	19:49	30	48	17	40	34	19	<9 (I/A)	1.3	37	E	0
	00:51	28	55	24	31	29	26	28	0.6	62	D	0
	01:06	27	43	23	30	28	25	27	0	NaN	Z	0
	01:21	26	37	21	30	28	24	28	0	NaN	Z	0
	01:36	30	37	24	34	32	27	30	0	NaN	Z	0
<b>12/06/2020</b>	10:35	45	70	33	55	45	36	34	1.4	187	B	0
	10:50	41	62	31	53	41	34	34	1.4	165	A	0
	11:05	41	60	30	52	44	33	33	1.6	156	A	0
	11:20	35	53	28	43	37	31	32	1.6	165	A	0
	11:35	38	65	27	49	38	29	32	2.1	180	A	0
	11:50	35	53	24	45	37	28	32	1.6	190	A	0
	20:30	35	62	30	40	36	32	33	1.5	46	D	0
	20:50	33	53	28	37	34	31	32	1.4	36	E	0
	00:00	30	51	25	38	31	27	28	0.8	75	F	0
	00:15	31	54	24	40	34	27	28	0.6	51	F	0
	00:30	30	50	25	36	31	27	28	0.7	50	F	0
	00:46	32	45	27	36	34	29	31	1.9	59	D	0

TN4												
09/06/2020	12:24	42	65	25	53	44	30	<30	2.8	150	A	0
	12:39	44	65	26	56	48	29	<30	2.3	125	A	0
	12:57	44	69	26	57	43	29	<30	3.2	156	B	0
	13:15	49	74	23	62	52	27	<30	3.7	162	B	0
	13:30	40	62	25	52	42	29	<30	3.7	166	C	0
	13:46	37	57	26	47	38	28	<30	3.9	155	B	0
	20:36	35	62	23	45	35	25	26	0.6	56	F	0
	20:51	34	46	27	40	36	29	25	1.4	94	D	0
	23:25	33	59	27	37	34	30	32	1.6	120	D	0
	23:40	31	52	26	37	33	28	31	0	NaN	Z	0
	23:56	28	50	22	34	30	25	28	0.9	67	D	0
00:13	27	44	23	33	29	25	27	1.3	46	D	0	
10/06/2020	11:55	41	66	25	53	44	28	<28	3.8	144	C	0
	12:12	43	64	23	55	44	28	<28	3.9	134	B	0
	12:27	45	63	21	55	49	28	<25	3.7	139	C	0
	12:43	42	61	25	53	45	28	<28	4	136	C	0
	13:01	44	65	24	57	46	29	<26	3.8	123	C	0
	13:17	37	53	23	47	41	26	<26	3.4	123	C	0
	20:34	28	51	20	37	31	23	<23	0.7	258	F	0
	20:50	23	41	18	34	23	18	<18	1	229	F	0
	23:24	36	59	19	51	30	20	<25	0	NaN	Z	0
	23:40	25	53	18	33	27	20	<25	0	NaN	Z	0
	23:56	25	52	21	33	26	22	25	0	NaN	Z	0
00:12	25	50	20	33	26	21	<25	0.6	258	F	0	
11/06/2020	11:47	47	67	20	59	51	23	<13 (I/A)	2.1	136	C	0
	12:04	47	74	21	60	49	23	<13 (I/A)	1.7	142	A	0

	12:21	49	72	21	62	50	23	<13 (I/A)	2	198	B	0
	12:38	42	67	21	54	42	23	<13 (I/A)	1.8	182	A	0
	12:54	36	63	21	48	36	23	<13 (I/A)	1.8	196	A	0
	13:09	37	57	21	49	41	23	<13 (I/A)	1.7	181	A	0
	21:25	29	52	17	41	28	18	<8 (I/A)	1.5	37	E	0
	21:41	30	59	18	38	29	21	<11 (I/A)	1	23	F	0
	22:00	29	61	17	40	26	19	<20	0	NaN	Z	0
	22:16	30	62	18	41	30	20	<20	0.7	93	F	0
	22:31	29	56	17	38	29	20	20	0.8	49	E	0
	22:48	33	62	18	42	29	21	<25	1.2	48	D	0
<b>12/06/2020</b>	12:15	39	66	23	50	40	26	<25	1.7	227	A	0
	12:30	33	58	21	44	32	24	<24	1.9	215	B	0
	12:47	49	73	22	62	47	25	<25	1.9	224	A	0
	13:02	55	75	22	67	58	25	<25	2.2	194	B	0
	13:18	49	70	22	62	52	25	<25	1.8	205	A	0
	13:36	52	71	23	65	55	25	<25	2.5	220	B	0
	21:25	29	53	20	37	30	23	26	0	NaN	Z	0
	21:47	34	60	20	49	34	23	<25	0.7	195	F	0
	22:00	51	66	24	64	54	26	<25	0	NaN	Z	0
	22:15	29	50	23	37	30	25	28	0.8	349	F	0
	22:32	29	50	23	35	30	25	28	0.7	38	F	0
	22:48	34	66	26	37	33	29	<30	0	NaN	Z	0

Notes:

- Acronyms used: I/A = Inaudible, m/s = metres/second, dB = decibel.
- Coloured Cells = Noise Criteria do not apply for any following weather conditions:
  - Wind speeds greater than 3m/s at 10m above ground level
  - Stability Category F temperature inversion conditions and wind speeds greater than 2m/s, 10m above the ground
  - Stability category G temperature inversions.



Attended noise monitoring was conducted at the “Bungalow” (TN4), “Barbers Lagoon” (TN3) and “Matong” (TN2) properties from 9<sup>th</sup> to the 12<sup>th</sup> of June 2020. The summary table (Table 4) displays a comprehensive results table displaying all measurements. The noise criterion for the mine is 35dB(A) Leq (15 min) for all operating times.

Noise from the mine must not exceed 45 dB(A) L1 (1 min) between 10 pm and 7 am. This is to minimise the potential for sleep disturbance as a result of individual loud noises from the mine. The results of the sleep disturbance monitoring show that the measured L1 (1 min) noise level did not exceed the sleep disturbance criterion.

The results above show that noise emissions from the mine did not exceed the operational noise criterion at the “Barbers Lagoon”, “Bungalow” or “Matong” monitoring locations during the entire monitoring period.

**Table 5 – Monthly Monitoring (Blasts – Limits Apply)**

Location	Parameter	Units of Measure	Frequency	No. of Blasts for the Month	Average Value	Max Value	100%ile Limit	(Potential) Non-compliance /breach	Date of Max Value Obtained
Coomalgah	Blast Noise	dB (Lin Peak)	Every Blast	7	95.33	100.40	120	Nil	18/06/2020
(TB2)	Blast Vibration	mm/s	Every Blast	7	1.35	3.78	10	Nil	3/06/2020

**Table 6- Monthly Monitoring (Dust PM10 – No Limits apply)**

Location	No. of samples required by licence	Lowest sample value	Mean of sample	Highest sample value
“Flixton” property* TEOM (µg/m <sup>3</sup> )	Continuous	0	8.6	143.2

*\*Mine owned property – no limit apply*

## TARRAWONGA COAL MINE – MONTHLY MONITORING SUMMARY

### Site Information

**EPL No:** 12365

**EPA Website Link:** <http://www.epa.nsw.gov.au/prpoeoapp/ViewPOEOLicence.aspx?DOCID=55113&SYSUID=1&LICID=12365>

**Licensee:** Tarrawonga Coal Pty Ltd

**Licensee Address:** Tarrawonga Coal Mine, 469 Goonbri Road, BOGGABRI NSW 2382

**EPL Monitoring Points:** See Figure 1 below

**Sampling Period:** July 2020

**Obtained Date:** 04/08/2020

**Publication Date:** 06/08/2020

**Table 1 - No Pollutant Limits Apply**

EPL ID	Pollutant	Units of Measure	Monitoring Frequency	No. of Samples for the Month	Date Sampled	Date of Max. Value Obtained	Min Value	Mean Value	Median Value	Max or Only Value	Comments
5	TSS	mg/L	Upon discharge	0	-	-	-	-	-	-	-
	Conductivity	µS /cm		0	-	-	-	-	-	-	-
	Oil & Grease	mg/L		0	-	-	-	-	-	-	-
	pH	pH		0	-	-	-	-	-	-	-
6	TSS	mg/L	Upon discharge	0	-	-	-	-	-	-	-
	Conductivity	µS /cm		0	-	-	-	-	-	-	-
	Oil & Grease	mg/L		0	-	-	-	-	-	-	-
	pH	pH		0	-	-	-	-	-	-	-

Table 2 - Pollutant Limits Apply

EPL ID	Pollutant	Units of Measure	Monitoring Frequency	No. of Samples for the Month	Date Sampled	Date of Max. Value Obtained	Min Value	Max or Only Value	100%ile Limit	Exceedance (Yes/No)	Comments
1	TSS	mg/L	Upon discharge	0	-	-	-	-	-	-	-
	Conductivity	µS/cm		0	-	-	-	-	-	-	-
	Oil & Grease	mg/L		0	-	-	-	-	-	-	-
	pH	pH		0	-	-	-	-	-	-	-
2	TSS	mg/L	Upon discharge	0	-	-	-	-	-	-	-
	Conductivity	µS/cm		0	-	-	-	-	-	-	-
	Oil & Grease	mg/L		0	-	-	-	-	-	-	-
	pH	pH		0	-	-	-	-	-	-	-
3	TSS	mg/L	Upon discharge	0	-	-	-	-	-	-	-
	Conductivity	µS/cm		0	-	-	-	-	-	-	-
	Oil & Grease	mg/L		0	-	-	-	-	-	-	-
	pH	pH		0	-	-	-	-	-	-	-
24	TSS	mg/L	Upon discharge	0	-	-	-	-	-	-	-
	Conductivity	µS/cm		0	-	-	-	-	-	-	-
	Oil & Grease	mg/L		0	-	-	-	-	-	-	-

EPL ID	Pollutant	Units of Measure	Monitoring Frequency	No. of Samples for the Month	Date Sampled	Date of Max. Value Obtained	Min Value	Max or Only Value	100%ile Limit	Exceedance (Yes/No)	Comments
	pH	pH		0	-	-	-	-	-	-	-
26	TSS	mg/L	Upon discharge	0	-	-	-	-	-	-	-
	Conductivity	µS/cm		0	-	-	-	-	-	-	-
	Oil & Grease	mg/L		0	-	-	-	-	-	-	-
	pH	pH		0	-	-	-	-	-	-	-
27	TSS	mg/L	Upon discharge	0	-	-	-	-	-	-	-
	Conductivity	µS/cm		0	-	-	-	-	-	-	-
	Oil & Grease	mg/L		0	-	-	-	-	-	-	-
	pH	pH		0	-	-	-	-	-	-	-

**Table 3 – Monitoring (Quarterly & 6 Monthly – No Limits apply)**

EPL ID	Pollutant	Units of Measure	Monitoring Frequency	No. of Samples for the Period	Date Sampled	Date of Max. Value Obtained	Min Value	Mean Value	Median Value	Max or Only Value
9	Conductivity	µS/cm	6 monthly – (Mar- Sep)	0	-	-	-	-	-	-
	Lead	mg/L		0	-	-	-	-	-	-
	pH	pH		0	-	-	-	-	-	-
	Standing Water Level	metres		0	-	-	-	-	-	-
10	Conductivity	µS /cm	6 monthly – (Mar- Sep)	0	-	-	-	-	-	-
	Lead	mg/L		0	-	-	-	-	-	-
	pH	pH		0	-	-	-	-	-	-
	Standing Water Level	metres		0	-	-	-	-	-	-
12	Conductivity	µS /cm	6 monthly – (Mar- Sep)	0	-	-	-	-	-	-
	Lead	mg/L		0	-	-	-	-	-	-
	pH	pH		0	-	-	-	-	-	-
	Standing Water Level	metres		0	-	-	-	-	-	-
13	Conductivity	µS /cm	Quarterly - (Feb, May, Aug, Nov)	0	-	-	-	-	-	-
	Oil & Grease	mg/L		0	-	-	-	-	-	-
	pH	pH		0	-	-	-	-	-	-
	TSS	mg/L		0	-	-	-	-	-	-

*Note: From April 2012 to February 2019, Electrical Conductivity was reported with the incorrect unit of measure (mS/cm). From January 2019 it has been corrected to µS/cm.*

**Table 4 – Quarterly Attended Noise Monitoring.**

(Noise Limits Apply - 35dB LAeq(15min) - Day, Evening and Night; 45dB LA1(1min) - Night )

*No Noise Monitoring data reported for July*

**Table 5 – Monthly Monitoring (Blasts – Limits Apply)**

Location	Parameter	Units of Measure	Frequency	No. of Blasts for the Month	Average Value	Max Value	100%ile Limit	(Potential) Non-compliance /breach	Date of Max Value Obtained
Coomalgah (TB2)	Blast Noise	dB (Lin Peak)	Every Blast	6	86.03	102.10	120	Nil	3/07/2020
	Blast Vibration	mm/s	Every Blast	6	0.31	0.91	10	Nil	3/07/2020

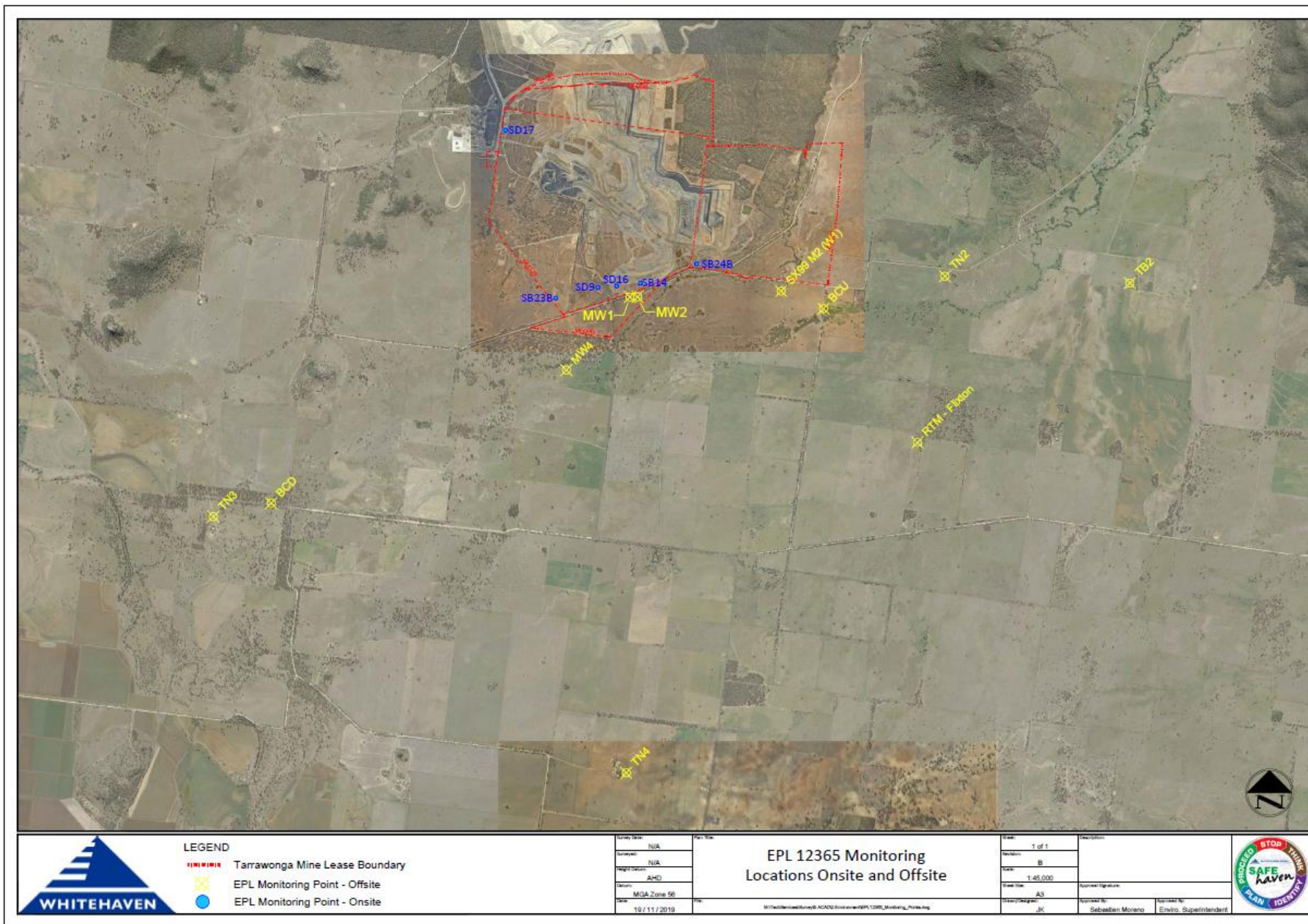
**Table 6- Monthly Monitoring (Dust PM10 – No Limits apply)**

Location	No. of samples required by licence	Lowest sample value	Mean of sample	Highest sample value
“Flixton” property* TEOM (µg/m <sup>3</sup> )	Continuous	0	9.34	101.6

*\*Mine owned property – no limit apply*



Figure 1 – EPL 12365 Monitoring Locations



**LEGEND**

	Tarrawonga Mine Lease Boundary
	EPL Monitoring Point - Offsite
	EPL Monitoring Point - Onsite

Survey Date:	N/A
Surveyor:	N/A
Project Status:	AHD
Division:	MGA Zone 96
Date:	19/11/2019

**EPL 12365 Monitoring Locations Onsite and Offsite**

W:\12365\12365\12365\_ACAD\12365\12365\_Monitoring\_Points.dwg

Sheet:	1 of 1	Drawn by:	
Revision:	B	Checked by:	Sebastian Moreno
Scale:	1:45,000	Approved Signature:	
Drawn Date:	AS	Drawn by:	JK
Drawn by:	JK	Checked by:	Sebastian Moreno
		Approved by:	Enrlio Superintendent



## TARRAWONGA COAL MINE – MONTHLY MONITORING SUMMARY

### Site Information

**EPL No:** 12365

**EPA Website Link:** <http://www.epa.nsw.gov.au/prpoeoapp/ViewPOEOLicence.aspx?DOCID=55113&SYSUID=1&LICID=12365>

**Licensee:** Tarrawonga Coal Pty Ltd

**Licensee Address:** Tarrawonga Coal Mine, 469 Goonbri Road, BOGGABRI NSW 2382

**EPL Monitoring Points:** See Figure 1 below

**Sampling Period:** August 2020

**Obtained Date:** 10/09/2020

**Publication Date:** 15/09/2020

**Table 1 - No Pollutant Limits Apply**

EPL ID	Pollutant	Units of Measure	Monitoring Frequency	No. of Samples for the Month	Date Sampled	Date of Max. Value Obtained	Min Value	Mean Value	Median Value	Max or Only Value	Comments
5	TSS	mg/L	Upon discharge	0	-	-	-	-	-	-	-
	Conductivity	µS/cm		0	-	-	-	-	-	-	-
	Oil & Grease	mg/L		0	-	-	-	-	-	-	-
	pH	pH		0	-	-	-	-	-	-	-
6	TSS	mg/L	Upon discharge	0	-	-	-	-	-	-	-
	Conductivity	µS/cm		0	-	-	-	-	-	-	-
	Oil & Grease	mg/L		0	-	-	-	-	-	-	-
	pH	pH		0	-	-	-	-	-	-	-

Table 2 - Pollutant Limits Apply

EPL ID	Pollutant	Units of Measure	Monitoring Frequency	No. of Samples for the Month	Date Sampled	Date of Max. Value Obtained	Min Value	Max or Only Value	100%ile Limit	Exceed-ance (Yes/No)	Comment/s
1	TSS	mg/L	Upon discharge	0	-	-	-	-	-	-	-
	Conductivity	µS/cm		0	-	-	-	-	-	-	-
	Oil & Grease	mg/L		0	-	-	-	-	-	-	-
	pH	pH		0	-	-	-	-	-	-	-
2	TSS	mg/L	Upon discharge	0	-	-	-	-	-	-	-
	Conductivity	µS/cm		0	-	-	-	-	-	-	-
	Oil & Grease	mg/L		0	-	-	-	-	-	-	-
	pH	pH		0	-	-	-	-	-	-	-
3	TSS	mg/L	Upon discharge	0	-	-	-	-	-	-	-
	Conductivity	µS/cm		0	-	-	-	-	-	-	-
	Oil & Grease	mg/L		0	-	-	-	-	-	-	-
	pH	pH		0	-	-	-	-	-	-	-
24	TSS	mg/L	Upon discharge	0	-	-	-	-	-	-	-
	Conductivity	µS/cm		0	-	-	-	-	-	-	-
	Oil & Grease	mg/L		0	-	-	-	-	-	-	-
	pH	pH		0	-	-	-	-	-	-	-

EPL ID	Pollutant	Units of Measure	Monitoring Frequency	No. of Samples for the Month	Date Sampled	Date of Max. Value Obtained	Min Value	Max or Only Value	100%ile Limit	Exceed -ance (Yes/ No)	Comment/s
26	TSS	mg/L	Upon discharge	0	-	-	-	-	-	-	-
	Conductivity	μS/cm		0	-	-	-	-	-	-	-
	Oil & Grease	mg/L		0	-	-	-	-	-	-	-
	pH	pH		0	-	-	-	-	-	-	-
27	TSS	mg/L	Upon discharge	0	-	-	-	-	-	-	-
	Conductivity	μS/cm		0	-	-	-	-	-	-	-
	Oil & Grease	mg/L		0	-	-	-	-	-	-	-
	pH	pH		0	-	-	-	-	-	-	-

**Table 3 – Monitoring (Quarterly & 6 Monthly – No Limits apply)**

EPL ID	Pollutant	Units of Measure	Monitoring Frequency	No. of Samples for the Period	Date Sampled	Date of Max. Value Obtained	Min Value	Mean Value	Median Value	Max or Only Value
9	Conductivity	µS/cm	6 monthly – (Mar- Sep)	0	-	-	-	-	-	-
	Lead	mg/L		0	-	-	-	-	-	-
	pH	pH		0	-	-	-	-	-	-
	Standing Water Level	metres		0	-	-	-	-	-	-
10	Conductivity	µS/cm	6 monthly – (Mar- Sep)	0	-	-	-	-	-	-
	Lead	mg/L		0	-	-	-	-	-	-
	pH	pH		0	-	-	-	-	-	-
	Standing Water Level	metres		0	-	-	-	-	-	-
12	Conductivity	µS/cm	6 monthly – (Mar- Sep)	0	-	-	-	-	-	-
	Lead	mg/L		0	-	-	-	-	-	-
	pH	pH		0	-	-	-	-	-	-
	Standing Water Level	metres		0	-	-	-	-	-	-
13	Conductivity	µS/cm	Quarterly - (Feb, May, Aug, Nov)	1	28.08.20	28.08.20	-	-	-	3,600
	Oil & Grease	mg/L		1	28.08.20	28.08.20	-	-	-	<5
	pH	pH		1	28.08.20	28.08.20	-	-	-	8.36
	TSS	mg/L		1	28.08.20	28.08.20	-	-	-	25

**Table 4 – Quarterly Attended Noise Monitoring**

(Noise Limits Apply -35dB LAeq(15min) -Day, Evening and Night;45dB LA1(1min) -Night )

*No Noise Monitoring data reported for August*

**Table 5 – Monthly Monitoring (Blasts – Limits Apply)**

Location	Parameter	Units of Measure	Frequency	No. of Blasts for the Month	Average Value	Max Value	100%ile Limit	(Potential) Non-compliance /breach	Date of Max. Value Obtained
Coomalgah	Blast Noise	dB (Lin Peak)	Every Blast	6	100.85	107.7	120	Nil	6/08/2020
(TB2)	Blast Vibration	mm/s	Every Blast	6	0.32	0.54	10	Nil	19/08/2020

**Table 6- Monthly Monitoring (Dust PM10 – No Limits apply)**

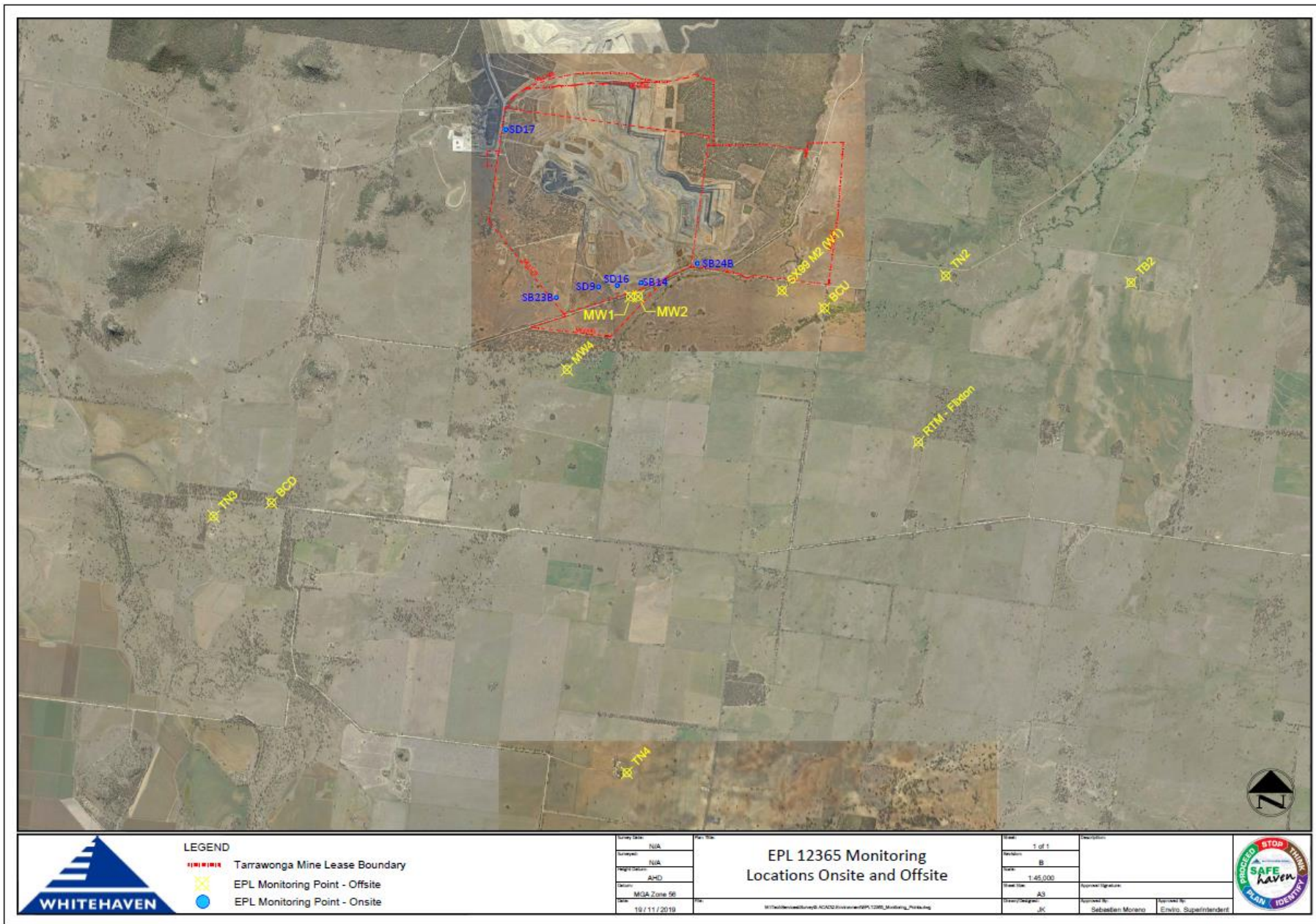
Location	No. of samples required by licence	Lowest sample value	Mean of sample	Highest sample value
“Flixton” property* TEOM (µg/m <sup>3</sup> )	Continuous	0	17.78	168.47 <sup>#</sup>

*\*Mine owned property – no limit apply*




*#Not considered mining related. Regional AQI registered dust event.*

Note: Environmental monitoring database transition occurred on 12 August. Approximately 1-hour worth of data was not retrievable.

Figure 1 – EPL 12365 Monitoring Locations



**LEGEND**

	Tarrawonga Mine Lease Boundary
	EPL Monitoring Point - Offsite
	EPL Monitoring Point - Onsite

Drawn Date:	N/A
Drawn By:	N/A
Project Name:	AMD
Location:	MGA Zone 96
Date:	19/11/2019

**EPL 12365 Monitoring Locations Onsite and Offsite**

Whitehaven Operations Pty Ltd  
 W:\Production\Operations\AMD\Production\EPL12365\_Monitoring\_Points.dwg

Page:	1 of 1
Revision:	B
Scale:	1:65,000
Sheet Size:	A3
Drawn By:	JK
Checked By:	Sebastian Moreno
Approved By:	Enviro. Superintendent





## TARRAWONGA COAL MINE – MONTHLY MONITORING SUMMARY

### Site Information

**EPL No:** 12365

**EPA Website Link:** <http://www.epa.nsw.gov.au/prpoeoapp/ViewPOEOLicence.aspx?DOCID=55113&SYSUID=1&LICID=12365>

**Licensee:** Tarrawonga Coal Pty Ltd

**Licensee Address:** Tarrawonga Coal Mine, 469 Goonbri Road, BOGGABRI NSW 2382

**EPL Monitoring Points:** See Figure 1 below

**Sampling Period:** September 2020

**Obtained Date:** 13/10/2020

**Publication Date:** 13/10/2020

**Table 1 - No Pollutant Limits Apply**

EPL ID	Pollutant	Units of Measure	Monitoring Frequency	No. of Samples for the Month	Date Sampled	Date of Max. Value Obtained	Min Value	Mean Value	Median Value	Max or Only Value	Comments
5	TSS	mg/L	Upon discharge	0	-	-	-	-	-	-	-
	Conductivity	µS/cm		0	-	-	-	-	-	-	-
	Oil & Grease	mg/L		0	-	-	-	-	-	-	-
	pH	pH		0	-	-	-	-	-	-	-
6	TSS	mg/L	Upon discharge	0	-	-	-	-	-	-	-
	Conductivity	µS/cm		0	-	-	-	-	-	-	-
	Oil & Grease	mg/L		0	-	-	-	-	-	-	-
	pH	pH		0	-	-	-	-	-	-	-

Table 2 - Pollutant Limits Apply

EPL ID	Pollutant	Units of Measure	Monitoring Frequency	No. of Samples for the Month	Date Sampled	Date of Max. Value Obtained	Min Value	Max or Only Value	100%ile Limit	Exceed-ance (Yes/No)	Comment/s
1	TSS	mg/L	Upon discharge	0	-	-	-	-	-	-	-
	Conductivity	µS/cm		0	-	-	-	-	-	-	-
	Oil & Grease	mg/L		0	-	-	-	-	-	-	-
	pH	pH		0	-	-	-	-	-	-	-
2	TSS	mg/L	Upon discharge	0	-	-	-	-	-	-	-
	Conductivity	µS/cm		0	-	-	-	-	-	-	-
	Oil & Grease	mg/L		0	-	-	-	-	-	-	-
	pH	pH		0	-	-	-	-	-	-	-
3	TSS	mg/L	Upon discharge	0	-	-	-	-	-	-	-
	Conductivity	µS/cm		0	-	-	-	-	-	-	-
	Oil & Grease	mg/L		0	-	-	-	-	-	-	-
	pH	pH		0	-	-	-	-	-	-	-
24	TSS	mg/L	Upon discharge	0	-	-	-	-	-	-	-
	Conductivity	µS/cm		0	-	-	-	-	-	-	-
	Oil & Grease	mg/L		0	-	-	-	-	-	-	-

EPL ID	Pollutant	Units of Measure	Monitoring Frequency	No. of Samples for the Month	Date Sampled	Date of Max. Value Obtained	Min Value	Max or Only Value	100%ile Limit	Exceed-ance (Yes/ No)	Comment/s
	pH	pH		0	-	-	-	-	-	-	-
26	TSS	mg/L	Upon discharge	0	-	-	-	-	-	-	-
	Conductivity	μS/cm		0	-	-	-	-	-	-	-
	Oil & Grease	mg/L		0	-	-	-	-	-	-	-
	pH	pH		0	-	-	-	-	-	-	-
27	TSS	mg/L	Upon discharge	0	-	-	-	-	-	-	-
	Conductivity	μS/cm		0	-	-	-	-	-	-	-
	Oil & Grease	mg/L		0	-	-	-	-	-	-	-
	pH	pH		0	-	-	-	-	-	-	-

**Table 3 – Monitoring (Quarterly & 6 Monthly – No Limits apply)**

EPL ID	Pollutant	Units of Measure	Monitoring Frequency	No. of Samples for the Period	Date Sampled	Date of Max. Value Obtained	Min Value	Mean Value	Median Value	Max or Only Value
9	Conductivity	µS/cm	6 monthly – (Mar- Sep)	1	23.09.20	23.09.20	-	-	-	3,260
	Lead	mg/L		1	23.09.20	23.09.20	-	-	-	2
	pH	pH		1	23.09.20	23.09.20	-	-	-	8.16
	Standing Water Level	metres		1	23.09.20	23.09.20	-	-	-	7.94
10	Conductivity	µS/cm	6 monthly – (Mar- Sep)	1	23.09.20	23.09.20	-	-	-	435
	Lead	mg/L		1	23.09.20	23.09.20	-	-	-	1
	pH	pH		1	23.09.20	23.09.20	-	-	-	7.39
	Standing Water Level	metres		1	23.09.20	23.09.20	-	-	-	4.18
12	Conductivity	µS/cm	6 monthly – (Mar- Sep)	1	23.09.20	23.09.20	-	-	-	3,380
	Lead	mg/L		1	23.09.20	23.09.20	-	-	-	2
	pH	pH		1	23.09.20	23.09.20	-	-	-	8.02
	Standing Water Level	metres		1	23.09.20	23.09.20	-	-	-	11.0
13	Conductivity	µS/cm	Quarterly - (Feb, May, Aug, Nov)	0	-	-	-	-	-	-
	Oil & Grease	mg/L		0	-	-	-	-	-	-
	pH	pH		0	-	-	-	-	-	-
	TSS	mg/L		0	-	-	-	-	-	-

*Note: From April 2012 to February 2019, Electrical Conductivity was reported with the incorrect unit of measure (mS/cm). From January 2019 it has been corrected to µS/cm.*

**Table 4 – Quarterly Attended Noise Monitoring**

(Noise Limits Apply -35dB LAeq(15min) -Day, Evening and Night;45dB LA1(1min) -Night )

(Extracts from consultants’ report for the quarter)

Date	Time	Total Noise Levels (dB)						Mine LAeq Noise Level (dB)	Wind Speed (m/s)	Wind Direction (°)	Stability Category	Rain (mm)
		LA eq	LA max	LA min	LA1	LA10	LA90					
<b>TN2</b>												
<b>14/09/2020</b>	09:45	34	65	19	43	32	22	24	0.5	217	A	0
	10:00	34	68	20	38	33	21	23	1.8	278	A	0
	10:15	33	54	20	46	35	21	21	0.7	148	A	0
	10:32	30	56	20	40	32	22	22	0.2	47	A	0
	10:48	32	61	20	41	31	22	22	1.8	306	A	0
	11:03	32	63	21	42	31	23	22	1.5	246	A	0
	21:23	30	61	16	39	26	18	<20	0.1	270	E	0
	21:40	24	48	17	34	24	18	<20	0.9	19	E	0
	22:00	28	63	16	34	23	18	<20	0.7	56	E	0
	22:16	29	61	16	40	21	17	<20	0.8	42	E	0
	22:32	24	54	16	31	21	17	<20	0.6	355	D	0
22:47	21	54	16	26	20	16	<18	0.8	10	E	0	

<b>15/09/2020</b>	10:03	38	68	21	50	37	24	23	3.1	212	D	0
	10:18	32	63	22	38	33	24	23	1.8	212	D	0
	10:34	33	61	22	45	33	24	<24	4.9	222	B	0
	10:49	33	57	21	45	36	24	<24	2.3	203	D	0
	11:05	32	53	22	43	33	23	<23	4.6	227	D	0
	11:22	30	59	20	40	30	22	<22	3.1	222	A	0
	21:25	28	63	16	38	24	16	<6 (I/A)	1.9	25	E	0
	21:41	23	50	16	35	21	16	<6 (I/A)	2	31	E	0
	22:00	23	55	16	33	19	16	<6 (I/A)	2.2	20	E	0
	22:16	22	51	16	31	20	17	<7 (I/A)	1.6	13	E	0
	22:31	26	54	18	33	24	19	<9 (I/A)	1.2	4	F	0
	22:47	33	56	25	38	35	28	<18 (I/A)	1.8	18	D	0
<b>16/09/2020</b>	09:29	37	66	23	48	35	25	<25	1.5	217	A	0
	09:45	31	56	21	40	32	23	<24	1.6	197	A	0
	10:02	30	55	21	39	32	23	<24	1.6	241	A	0
	10:17	32	61	22	40	32	24	<24	3.3	261	A	0
	10:34	32	58	21	42	34	23	<24	2.7	193	A	0
	10:50	31	53	21	42	32	24	<24	1.4	201	A	0
	21:22	34	50	27	40	36	30	34	0.3	323	E	0
	21:38	31	58	27	36	32	29	31	0.9	6	E	0

	22:00	29	55	23	35	31	25	<29	1.6	14	D	0
	22:16	26	48	21	32	27	24	26	1.8	23	D	0
	22:32	25	52	19	32	27	21	25	2.5	33	E	0
	22:48	27	55	20	32	27	22	25	2	27	E	0
<b>17/09/2020</b>	10:46	37	65	20	50	32	21	<21	0.6	60	A	0
	11:04	32	66	20	37	28	21	<21	1.1	6	A	0
	11:20	30	57	20	40	28	21	<21	0.6	335	B	0
	11:36	35	69	20	43	29	21	<21	2.1	52	A	0
	11:53	31	63	20	40	27	21	<21	1.9	12	A	0
	12:08	33	65	19	38	28	21	<21	1.7	263	A	0
	21:25	23	52	17	33	23	18	<8 (I/A)	1.9	59	E	0
	21:41	22	53	16	30	21	17	<20	0.9	80	D	0
	22:00	24	57	16	25	20	17	<7 (I/A)	1.5	38	D	0
	22:15	27	63	17	26	21	18	<8 (I/A)	1.3	70	E	0
	22:31	24	54	17	30	21	18	<8 (I/A)	1.5	57	E	0
	22:46	24	58	16	29	19	16	<6 (I/A)	1.7	52	E	0
<b>TN3</b>												
<b>14/09/2020</b>	11:57	38	61	21	52	36	22	<12 (I/A)	2.2	155	B	0
	12:12	46	73	21	60	34	22	<12 (I/A)	1.5	161	B	0
	12:30	38	71	21	47	33	22	<12 (I/A)	2.1	256	A	0
	12:47	37	65	21	49	38	23	<13 (I/A)	2.4	256	B	0
	13:03	34	58	21	47	34	22	<12 (I/A)	2.1	299	A	0

	13:19	45	69	21	59	39	23	<13 (I/A)	0.9	203	B	0
	20:40	37	68	22	48	35	24	<14 (I/A)	1.2	22	E	0
	20:56	41	69	18	49	45	22	<12 (I/A)	1.1	17	F	0
	23:23	31	54	19	43	33	20	<23	1.4	22	E	0
	23:38	48	69	19	63	35	21	<22	2.4	72	E	0
	23:55	40	56	20	54	34	22	23	0.5	4	D	0
	00:10	46	61	20	57	51	22	24	1.6	86	E	0
<b>15/09/2020</b>	11:55	52	70	20	65	53	22	<12 (I/A)	0.6	301	A	0
	12:12	43	65	20	55	44	23	<13 (I/A)	2	329	A	0
	12:29	43	68	20	57	34	22	<12 (I/A)	3.1	238	A	0
	12:45	48	73	20	61	41	22	<12 (I/A)	0.4	95	A	0
	13:01	43	71	19	55	33	21	<11 (I/A)	1.7	223	C	0
	13:19	43	73	20	56	38	22	<12 (I/A)	2.7	138	B	0
	20:36	37	58	19	47	42	22	<12 (I/A)	2.2	28	E	0
	20:52	25	55	17	36	23	18	<8 (I/A)	2.3	23	E	0
	23:23	48	61	20	56	53	22	24	2.2	357	D	0
	23:38	46	59	20	56	53	22	24	3.6	17	D	0
	23:54	45	58	20	55	51	22	24	2.1	20	D	0
	00:09	48	59	21	55	53	24	25	4.1	7	D	0
<b>16/09/2020</b>	11:27	43	68	22	55	38	26	<16 (I/A)	2	176	A	0
	11:43	38	61	24	48	40	28	<18 (I/A)	3.2	295	A	0
	12:00	39	68	22	49	36	26	<16 (I/A)	1.7	15	A	0
	12:15	39	64	21	48	40	26	<16 (I/A)	2.5	331	A	0
	12:33	33	55	22	44	36	26	<16 (I/A)	4.7	321	B	0
	12:49	38	72	22	46	37	26	<16 (I/A)	2.4	313	B	0
	20:35	29	59	21	38	28	22	<22	1	17	D	0
	20:51	26	54	22	35	26	23	<13 (I/A)	0.5	314	F	0



	23:22	27	53	17	39	26	18	<20	3.1	22	E	0
	23:38	32	57	18	46	25	19	<20	2.4	18	E	0
	23:55	29	54	18	42	25	19	<20	1.6	23	E	0
	00:10	37	68	18	43	26	19	<20	1	40	F	0
<b>17/09/2020</b>	10:18	48	68	21	61	52	25	<15 (I/A)	1.3	307	A	0
	10:33	41	66	21	54	41	23	<13 (I/A)	1.5	301	A	0
	10:48	44	68	21	58	41	24	<14 (I/A)	0.2	270	A	0
	11:03	45	69	21	58	44	23	<13 (I/A)	1.1	6	A	0
	11:18	49	76	20	59	44	23	<13 (I/A)	0.6	335	B	0
	11:33	33	58	20	46	31	21	<11 (I/A)	2.1	52	A	0
	20:10	31	56	25	37	32	26	<16 (I/A)	1	60	E	0
	20:25	27	45	23	32	28	25	<15 (I/A)	1.6	63	E	0
	23:24	32	56	21	43	31	25	27	1.4	32	F	0
	23:40	27	52	22	34	27	24	26	0.5	90	F	0
	23:56	30	55	25	37	31	27	26	2.3	25	E	0
	00:11	30	54	26	37	29	27	<26	3.6	18	E	0
<b>TN4</b>												
<b>14/09/2020</b>	13:59	41	73	24	52	42	27	<17 (I/A)	1.9	139	A	0
	14:15	38	64	22	47	41	27	<17 (I/A)	5.4	224	A	0
	14:30	35	55	23	44	38	27	<17 (I/A)	0.1	69	A	0
	14:47	40	65	23	49	43	29	<19 (I/A)	2.5	175	A	0
	15:02	42	65	24	55	41	27	<17 (I/A)	5	221	C	0
	15:17	38	64	22	49	40	26	<16 (I/A)	3.3	203	D	0
	19:50	34	58	24	47	32	26	<16 (I/A)	0.4	21	F	0
	20:05	28	48	22	35	28	24	<14 (I/A)	0.6	71	F	0
	00:48	32	52	28	40	33	30	<20 (I/A)	1.2	269	E	0
	01:03	29	41	25	33	31	27	<17 (I/A)	1	264	E	0

	01:18	30	46	25	40	30	27	<17 (I/A)	1.1	63	D	0
	01:33	31	45	27	36	34	28	<18 (I/A)	2.5	55	E	0
<b>15/09/2020</b>	14:06	40	67	21	51	41	24	<14 (I/A)	2.8	144	A	0
	14:21	39	66	21	51	38	23	<13 (I/A)	0.7	160	A	0
	14:36	39	64	21	51	40	23	<13 (I/A)	0.5	80	A	0
	14:51	38	66	21	49	40	24	<14 (I/A)	1.7	160	D	0
	15:08	35	57	20	45	38	23	<13 (I/A)	1	334	A	0
	15:24	39	62	20	52	41	25	<15 (I/A)	0.7	229	A	0
	19:39	33	53	22	46	31	24	<14 (I/A)	1.4	27	F	0
	19:54	30	51	22	42	31	24	<14 (I/A)	1.7	23	F	0
	00:50	27	49	23	31	29	25	<15 (I/A)	3.7	8	D	0
	01:05	27	36	23	30	29	26	<16 (I/A)	4.1	31	D	0
	01:20	27	48	24	30	28	26	<16 (I/A)	5.1	52	D	0
	01:35	27	46	23	30	28	25	<15 (I/A)	3.2	33	D	0
	<b>16/09/2020</b>	13:37	41	64	26	49	43	33	<23 (I/A)	3.9	241	A
13:53		43	66	29	55	44	33	<23 (I/A)	2.1	337	B	0
14:08		43	71	28	53	44	33	<23 (I/A)	3.9	279	D	0
14:24		43	71	27	53	44	31	<21 (I/A)	5.6	294	C	0
14:40		44	78	27	54	45	33	<23 (I/A)	4.3	307	C	0
14:56		44	69	29	55	45	33	<23 (I/A)	4.6	271	C	0
19:40		28	45	23	35	30	25	<15 (I/A)	2	26	F	0
19:55		26	41	21	34	28	23	<13 (I/A)	2.6	27	F	0
00:45		25	43	21	30	27	23	<13 (I/A)	1	67	E	0
01:00		25	36	21	29	27	23	<13 (I/A)	1	56	E	0
01:15		24	45	20	29	25	22	<12 (I/A)	1.9	62	F	0
01:30	23	43	20	26	24	22	<12 (I/A)	1.2	52	F	0	
	12:00	35	55	20	47	37	23	<13 (I/A)	0.8	330	A	0

<b>17/09/2020</b>	12:15	41	63	20	54	42	23	<13 (I/A)	2	301	A	0
	12:30	34	67	20	42	34	23	<13 (I/A)	1.9	201	A	0
	12:45	39	62	21	50	41	24	<14 (I/A)	1.8	67	D	0
	13:00	37	64	22	49	38	25	<15 (I/A)	1	139	A	0
	13:15	31	48	20	41	34	23	<13 (I/A)	1.5	332	A	0
	21:30	24	40	20	31	25	22	<12 (I/A)	1.6	76	D	0
	21:45	23	42	21	31	24	22	<12 (I/A)	0.8	80	D	0
	22:00	25	43	21	33	26	22	<12 (I/A)	1.5	38	D	0
	22:15	24	45	21	30	25	22	<12 (I/A)	1.3	70	E	0
	22:30	24	39	21	29	25	23	<23	1.5	57	E	0
	22:45	31	50	22	42	32	24	<24	1.7	52	E	0

Notes:

- Acronyms used: I/A = Inaudible, m/s = metres/second, dB = decibel.
- Coloured Cells = Non-compliant weather conditions not included in calculation of average for that period. Non-compliant weather conditions are any:
  - a) Wind speeds greater than 3m/s at 10m above ground level
  - b) Stability Category F temperature inversion conditions and wind speeds greater than 2m/s, 10m above the ground
  - c) Stability category G temperature inversions.
- Real time weather conditions retrieved from the mine, after monitoring occurs.

**Table 5 – Monthly Monitoring (Blasts – Limits Apply)**

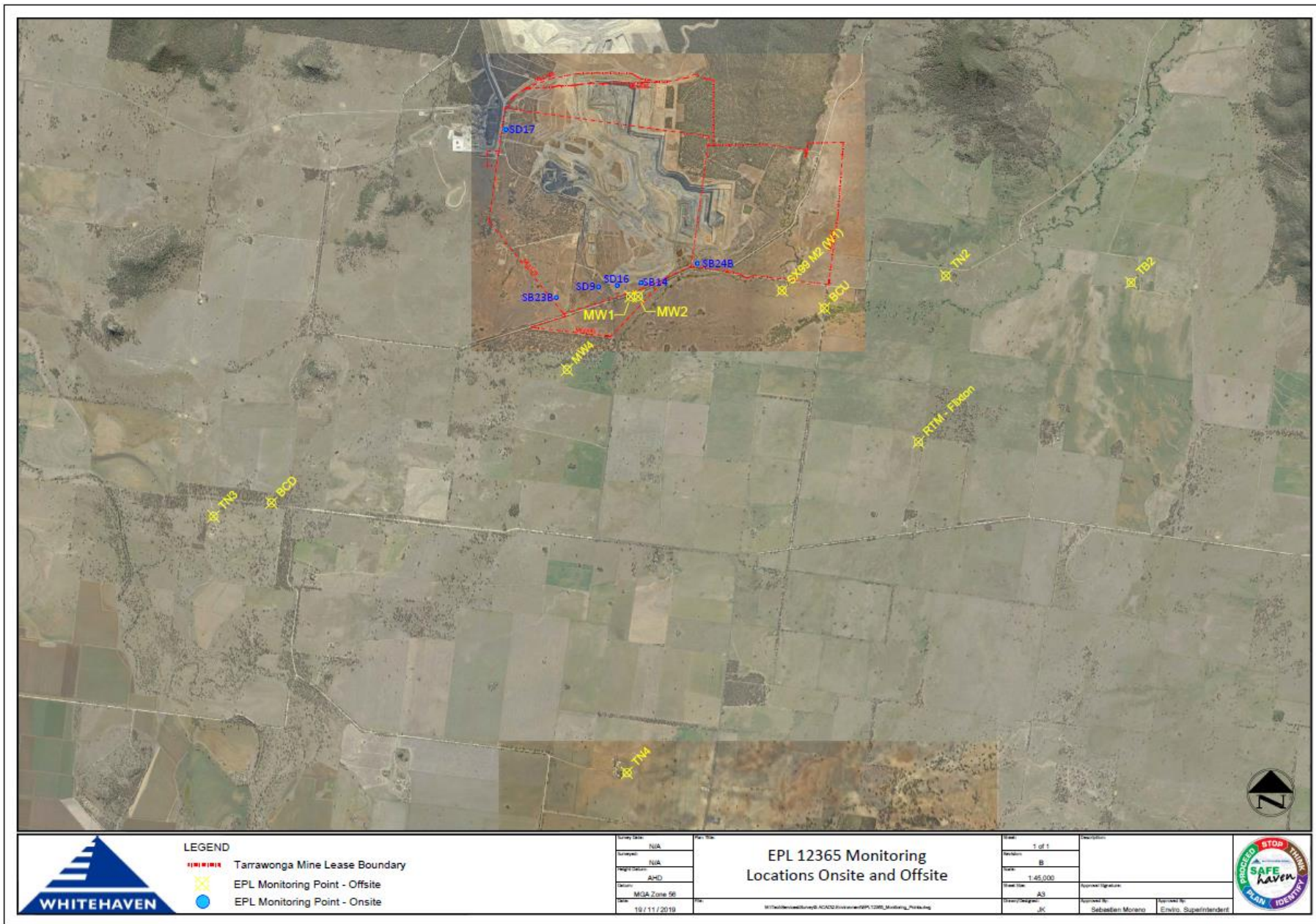
Location	Parameter	Units of Measure	Frequency	No. of Blasts for the Month	Average Value	Max Value	100%ile Limit	(Potential) Non-compliance /breach	Date of Max. Value Obtained
Coomalgah	Blast Noise	dB (Lin Peak)	Every Blast	8	100.48	107.20	120	Nil	18/09/2020
(TB2)	Blast Vibration	mm/s	Every Blast	8	0.32	1.27	10	Nil	28/09/2020

**Table 6- Monthly Monitoring (Dust PM10 – No Limits apply)**

Location	No. of samples required by licence	Lowest sample value	Mean of sample	Highest sample value
“Flixton” property* TEOM (µg/m <sup>3</sup> ) – 24hr average	Continuous	3.8	16.4	44.1

*\*Mine owned property – no limit apply*

Figure 1 – EPL 12365 Monitoring Locations



**LEGEND**

- Tarrawonga Mine Lease Boundary
- EPL Monitoring Point - Offsite
- EPL Monitoring Point - Onsite

Drawn Date:	N/A
Drawn By:	N/A
Project Name:	AMD
Location:	MGA Zone 96
Date:	19/11/2019

**EPL 12365 Monitoring Locations Onsite and Offsite**

Whitehaven Operations Pty Ltd - EPL 12365 - Monitoring - Processing

Page:	1 of 1
Revision:	B
Scale:	1:65,000
Sheet Size:	A3
Drawn By:	JK
Checked By:	Sebastian Moreno
Approved By:	Enviro. Superintendent



## TARRAWONGA COAL MINE – MONTHLY MONITORING SUMMARY

### Site Information

**EPL No:** 12365

**EPA Website Link:** <http://www.epa.nsw.gov.au/prpoeoapp/ViewPOEOLicence.aspx?DOCID=55113&SYSUID=1&LICID=12365>

**Licensee:** Tarrawonga Coal Pty Ltd

**Licensee Address:** Tarrawonga Coal Mine, 469 Goonbri Road, BOGGABRI NSW 2382

**EPL Monitoring Points:** See Figure 1 below

**Sampling Period:** October 2020

**Obtained Date:** 2/11/2020

**Publication Date:** 12/11/2020

**Table 1 - No Pollutant Limits Apply**

EPL ID	Pollutant	Units of Measure	Monitoring Frequency	No. of Samples for the Month	Date Sampled	Date of Max. Value Obtained	Min Value	Mean Value	Median Value	Max or Only Value	Comments
5	TSS	mg/L	Upon discharge	0	-	-	-	-	-	-	-
	Conductivity	µS/cm		0	-	-	-	-	-	-	-
	Oil & Grease	mg/L		0	-	-	-	-	-	-	-
	pH	pH		0	-	-	-	-	-	-	-
6	TSS	mg/L	Upon discharge	0	-	-	-	-	-	-	-
	Conductivity	µS/cm		0	-	-	-	-	-	-	-
	Oil & Grease	mg/L		0	-	-	-	-	-	-	-
	pH	pH		0	-	-	-	-	-	-	-

Table 2 - Pollutant Limits Apply

EPL ID	Pollutant	Units of Measure	Monitoring Frequency	No. of Samples for the Month	Date Sampled	Date of Max. Value Obtained	Min Value	Max or Only Value	100%ile Limit	Exceed-ance (Yes/No)	Comment/s
1	TSS	mg/L	Upon discharge	0	-	-	-	-	-	-	-
	Conductivity	µS/cm		0	-	-	-	-	-	-	-
	Oil & Grease	mg/L		0	-	-	-	-	-	-	-
	pH	pH		0	-	-	-	-	-	-	-
2	TSS	mg/L	Upon discharge	0	-	-	-	-	-	-	-
	Conductivity	µS/cm		0	-	-	-	-	-	-	-
	Oil & Grease	mg/L		0	-	-	-	-	-	-	-
	pH	pH		0	-	-	-	-	-	-	-
3	TSS	mg/L	Upon discharge	0	-	-	-	-	-	-	-
	Conductivity	µS/cm		0	-	-	-	-	-	-	-
	Oil & Grease	mg/L		0	-	-	-	-	-	-	-
	pH	pH		0	-	-	-	-	-	-	-
24	TSS	mg/L	Upon discharge	0	-	-	-	-	-	-	-
	Conductivity	µS/cm		0	-	-	-	-	-	-	-
	Oil & Grease	mg/L		0	-	-	-	-	-	-	-

EPL ID	Pollutant	Units of Measure	Monitoring Frequency	No. of Samples for the Month	Date Sampled	Date of Max. Value Obtained	Min Value	Max or Only Value	100%ile Limit	Exceed-ance (Yes/ No)	Comment/s
	pH	pH		0	-	-	-	-	-	-	-
26	TSS	mg/L	Upon discharge	0	-	-	-	-	-	-	-
	Conductivity	µS/cm		0	-	-	-	-	-	-	-
	Oil & Grease	mg/L		0	-	-	-	-	-	-	-
	pH	pH		0	-	-	-	-	-	-	-
27	TSS	mg/L	Upon discharge	0	-	-	-	-	-	-	-
	Conductivity	µS/cm		0	-	-	-	-	-	-	-
	Oil & Grease	mg/L		0	-	-	-	-	-	-	-
	pH	pH		0	-	-	-	-	-	-	-



**Table 3 – Monitoring (Quarterly & 6 Monthly – No Limits apply)**

EPL ID	Pollutant	Units of Measure	Monitoring Frequency	No. of Samples for the Period	Date Sampled	Date of Max. Value Obtained	Min Value	Mean Value	Median Value	Max or Only Value
9	Conductivity	µS/cm	6 monthly – (Mar- Sep)	0	-	-	-	-	-	-
	Lead	mg/L		0	-	-	-	-	-	-
	pH	pH		0	-	-	-	-	-	-
	Standing Water Level	metres		0	-	-	-	-	-	-
10	Conductivity	µS/cm	6 monthly – (Mar- Sep)	0	-	-	-	-	-	-
	Lead	mg/L		0	-	-	-	-	-	-
	pH	pH		0	-	-	-	-	-	-
	Standing Water Level	metres		0	-	-	-	-	-	-
12	Conductivity	µS/cm	6 monthly – (Mar- Sep)	0	-	-	-	-	-	-
	Lead	mg/L		0	-	-	-	-	-	-
	pH	pH		0	-	-	-	-	-	-
	Standing Water Level	metres		0	-	-	-	-	-	-
13	Conductivity	µS/cm	Quarterly - (Feb, May, Aug, Nov)	0	-	-	-	-	-	-
	Oil & Grease	mg/L		0	-	-	-	-	-	-
	pH	pH		0	-	-	-	-	-	-
	TSS	mg/L		0	-	-	-	-	-	-

*Note: From April 2012 to February 2019, Electrical Conductivity was reported with the incorrect unit of measure (mS/cm). From January 2019 it has been corrected to µS/cm.*

**Table 4 – Quarterly Attended Noise Monitoring**

(Noise Limits Apply -35dB LAeq(15min) -Day, Evening and Night;45dB LA1(1min) -Night )

*Next Attended Noise Monitoring occurs in December 2020.*

**Table 5 – Monthly Monitoring (Blasts – Limits Apply)**

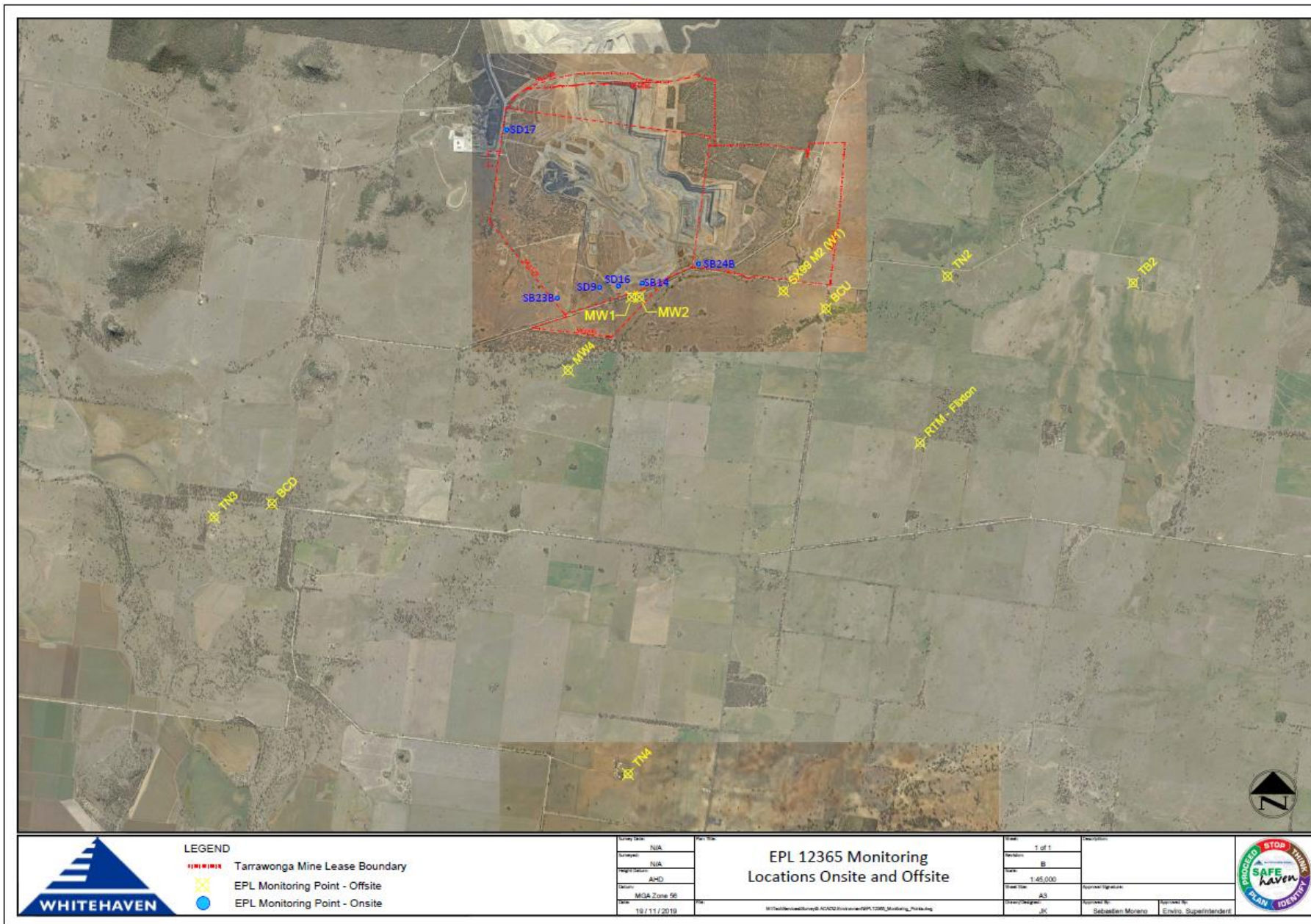
Location	Parameter	Units of Measure	Frequency	No. of Blasts for the Month	Average Value	Max Value	100%ile Limit	(Potential) Non-compliance /breach	Date of Max. Value Obtained
Coomalgah (TB2)	Blast Noise	dB (Lin Peak)	Every Blast	6	100.63	106.4	120	Nil	09/10/2020
	Blast Vibration	mm/s	Every Blast	6	0.16	0.45	10	Nil	09/10/2020

**Table 6- Monthly Monitoring (Dust PM10 – No Limits apply)**

Location	No. of samples required by licence	Lowest sample value	Mean of sample	Highest sample value
“Flixton” property* TEOM (µg/m <sup>3</sup> ) – 24hr average	Continuous	0	14.19	49.88

*\*Mine owned property – no limit apply*

Figure 1 – EPL 12365 Monitoring Locations



**LEGEND**  
 Tarrawonga Mine Lease Boundary  
 EPL Monitoring Point - Offsite  
 EPL Monitoring Point - Onsite

Drawn Date:	N/A
Drawn By:	N/A
Project Name:	AMD
Location:	MGA Zone 96
Date:	19/11/2019

**EPL 12365 Monitoring Locations Onsite and Offsite**

Page:	1 of 1
Revision:	B
Scale:	1:65,000
Sheet Size:	A3
Drawn By:	JK
Checked By:	Sebastian Moreno
Approved By:	Enviro. Superintendent



## TARRAWONGA COAL MINE – MONTHLY MONITORING SUMMARY

### Site Information

**EPL No:** 12365

**EPA Website Link:** <http://www.epa.nsw.gov.au/prpoeoapp/ViewPOEOLicence.aspx?DOCID=55113&SYSUID=1&LICID=12365>

**Licensee:** Tarrawonga Coal Pty Ltd

**Licensee Address:** Tarrawonga Coal Mine, 469 Goonbri Road, BOGGABRI NSW 2382

**EPL Monitoring Points:** See Figure 1 below

**Sampling Period:** November 2020

**Obtained Date:** 4/12/2020

**Publication Date:** 10/12/2020

**Table 1 - No Pollutant Limits Apply**

EPL ID	Pollutant	Units of Measure	Monitoring Frequency	No. of Samples for the Month	Date Sampled	Date of Max. Value Obtained	Min Value	Mean Value	Median Value	Max or Only Value	Comments
5	TSS	mg/L	Upon discharge	0	-	-	-	-	-	-	-
	Conductivity	µS/cm		0	-	-	-	-	-	-	-
	Oil & Grease	mg/L		0	-	-	-	-	-	-	-
	pH	pH		0	-	-	-	-	-	-	-
6	TSS	mg/L	Upon discharge	0	-	-	-	-	-	-	-
	Conductivity	µS/cm		0	-	-	-	-	-	-	-
	Oil & Grease	mg/L		0	-	-	-	-	-	-	-
	pH	pH		0	-	-	-	-	-	-	-

Table 2 - Pollutant Limits Apply

EPL ID	Pollutant	Units of Measure	Monitoring Frequency	No. of Samples for the Month	Date Sampled	Date of Max. Value Obtained	Min Value	Max or Only Value	100%ile Limit	Exceed-ance (Yes/No)	Comment/s
1	TSS	mg/L	Upon discharge	0	-	-	-	-	-	-	-
	Conductivity	µS/cm		0	-	-	-	-	-	-	-
	Oil & Grease	mg/L		0	-	-	-	-	-	-	-
	pH	pH		0	-	-	-	-	-	-	-
2	TSS	mg/L	Upon discharge	0	-	-	-	-	-	-	-
	Conductivity	µS/cm		0	-	-	-	-	-	-	-
	Oil & Grease	mg/L		0	-	-	-	-	-	-	-
	pH	pH		0	-	-	-	-	-	-	-
3	TSS	mg/L	Upon discharge	0	-	-	-	-	-	-	-
	Conductivity	µS/cm		0	-	-	-	-	-	-	-
	Oil & Grease	mg/L		0	-	-	-	-	-	-	-
	pH	pH		0	-	-	-	-	-	-	-
24	TSS	mg/L	Upon discharge	0	-	-	-	-	-	-	-
	Conductivity	µS/cm		0	-	-	-	-	-	-	-
	Oil & Grease	mg/L		0	-	-	-	-	-	-	-

EPL ID	Pollutant	Units of Measure	Monitoring Frequency	No. of Samples for the Month	Date Sampled	Date of Max. Value Obtained	Min Value	Max or Only Value	100%ile Limit	Exceed-ance (Yes/ No)	Comment/s
	pH	pH		0	-	-	-	-	-	-	-
26	TSS	mg/L	Upon discharge	0	-	-	-	-	-	-	-
	Conductivity	μS/cm		0	-	-	-	-	-	-	-
	Oil & Grease	mg/L		0	-	-	-	-	-	-	-
	pH	pH		0	-	-	-	-	-	-	-
27	TSS	mg/L	Upon discharge	0	-	-	-	-	-	-	-
	Conductivity	μS/cm		0	-	-	-	-	-	-	-
	Oil & Grease	mg/L		0	-	-	-	-	-	-	-
	pH	pH		0	-	-	-	-	-	-	-

**Table 3 – Monitoring (Quarterly & 6 Monthly – No Limits apply)**

EPL ID	Pollutant	Units of Measure	Monitoring Frequency	No. of Samples for the Period	Date Sampled	Date of Max. Value Obtained	Min Value	Mean Value	Median Value	Max or Only Value
9	Conductivity	µS/cm	6 monthly – (Mar- Sep)	0	-	-	-	-	-	-
	Lead	mg/L		0	-	-	-	-	-	-
	pH	pH		0	-	-	-	-	-	-
	Standing Water Level	metres		0	-	-	-	-	-	-
10	Conductivity	µS/cm	6 monthly – (Mar- Sep)	0	-	-	-	-	-	-
	Lead	mg/L		0	-	-	-	-	-	-
	pH	pH		0	-	-	-	-	-	-
	Standing Water Level	metres		0	-	-	-	-	-	-
12	Conductivity	µS/cm	6 monthly – (Mar- Sep)	0	-	-	-	-	-	-
	Lead	mg/L		0	-	-	-	-	-	-
	pH	pH		0	-	-	-	-	-	-
	Standing Water Level	metres		0	-	-	-	-	-	-
13	Conductivity	µS/cm	Quarterly - (Feb, May, Aug, Nov)	1	-	-	-	-	-	1,700
	Oil & Grease	mg/L		1	-	-	-	-	-	5
	pH	pH		1	-	-	-	-	-	8.58
	TSS	mg/L		1	-	-	-	-	-	40

*Note: From April 2012 to February 2019, Electrical Conductivity was reported with the incorrect unit of measure (mS/cm). From January 2019 it has been corrected to µS/cm.*



**Table 4 – Quarterly Attended Noise Monitoring**

(Noise Limits Apply -35dB LAeq(15min) -Day, Evening and Night;45dB LA1(1min) -Night )

*No Noise Monitoring data reported for November*

**Table 5 – Monthly Monitoring (Blasts – Limits Apply)**

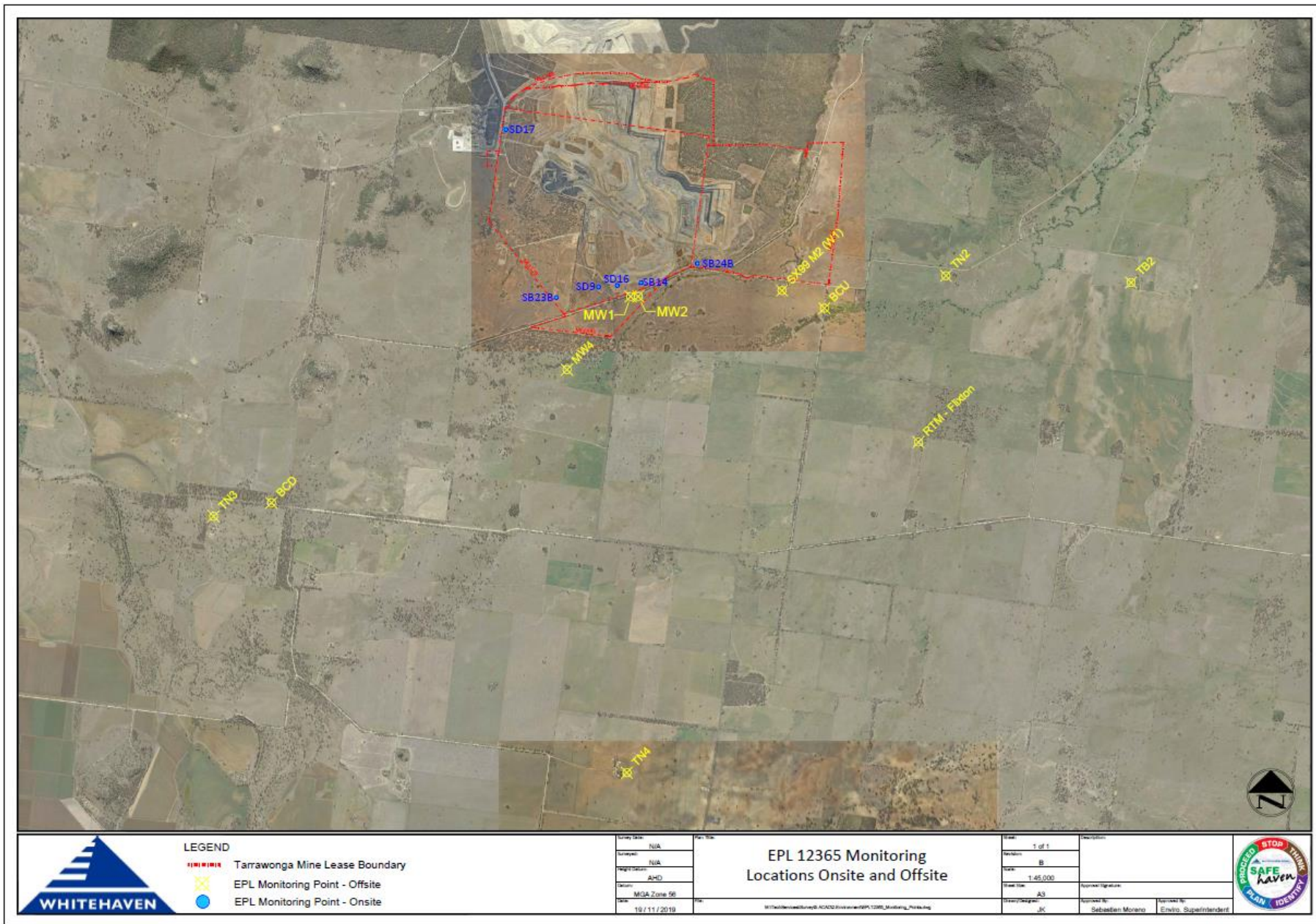
Location	Parameter	Units of Measure	Frequency	No. of Blasts for the Month	Average Value	Max Value	100%ile Limit	(Potential) Non-compliance /breach	Date of Max. Value Obtained
Coomalgah (TB2)	Blast Noise	dB (Lin Peak)	Every Blast	6	95.97	112.20	<b>120</b>	<b>Nil</b>	10/11/2020
	Blast Vibration	mm/s	Every Blast	6	0.38	0.85	<b>10</b>	<b>Nil</b>	10/11/2020

**Table 6- Monthly Monitoring (Dust PM10 – No Limits apply)**

Location	No. of samples required by licence	Lowest sample value	Mean of sample	Highest sample value
“Flixton” property* TEOM (µg/m <sup>3</sup> )	Continuous	0	21.3	49.5

*\*Mine owned property – no limit apply*

Figure 1 – EPL 12365 Monitoring Locations



**LEGEND**  
 Tarrawonga Mine Lease Boundary  
 EPL Monitoring Point - Offsite  
 EPL Monitoring Point - Onsite

Drawn Date:	N/A
Drawn By:	N/A
Project Name:	AMD
Location:	MGA Zone 98
Date:	19/11/2019

**EPL 12365 Monitoring Locations Onsite and Offsite**

Page:	1 of 1
Revision:	B
Scale:	1:65,000
Sheet No.:	A3
Author:	JK
Checked By:	Sebastian Moreno
Approved By:	Enviro. Superintendent



## TARRAWONGA COAL MINE – MONTHLY MONITORING SUMMARY

### Site Information

**EPL No:** 12365

**EPA Website Link:** <http://www.epa.nsw.gov.au/prpoeoapp/ViewPOEOLicence.aspx?DOCID=55113&SYSUID=1&LICID=12365>

**Licensee:** Tarrawonga Coal Pty Ltd

**Licensee Address:** Tarrawonga Coal Mine, 469 Goonbri Road, BOGGABRI NSW 2382

**EPL Monitoring Points:** See Figure 1 below

**Sampling Period:** December 2020

**Obtained Date:** 8/01/2021

**Publication Date:** 8/1/2021

**Table 1 - No Pollutant Limits Apply**

EPL ID	Pollutant	Units of Measure	Monitoring Frequency	No. of Samples for the Month	Date Sampled	Date of Max. Value Obtained	Min Value	Mean Value	Median Value	Max or Only Value	Comments
5	TSS	mg/L	Upon discharge	1	22/12/2020	-	-	-	-	66	-
	Conductivity	µS/cm		1	22/12/2020	-	-	-	-	96	-
	Oil & Grease	mg/L		1	22/12/2020	-	-	-	-	<5	-
	pH	pH		1	22/12/2020	-	-	-	-	6.75	-
6	TSS	mg/L	Upon discharge	1	22/12/2020	-	-	-	-	28	-
	Conductivity	µS/cm		1	22/12/2020	-	-	-	-	138	-
	Oil & Grease	mg/L		1	22/12/2020	-	-	-	-	<5	-
	pH	pH		1	22/12/2020	-	-	-	-	7.03	-

**Table 2 - Pollutant Limits Apply**

EPL ID	Pollutant	Units of Measure	Monitoring Frequency	No. of Samples for the Month	Date Sampled	Date of Max. Value Obtained	Min Value	Max or Only Value	100%ile Limit	Exceed-ance (Yes/ No)	Comment/s
1	TSS	mg/L	Upon discharge	0	-	-	-	-	-	-	-
	Conductivity	µS/cm		0	-	-	-	-	-	-	-
	Oil & Grease	mg/L		0	-	-	-	-	-	-	-
	pH	pH		0	-	-	-	-	-	-	-
2	TSS	mg/L	Upon discharge	0	-	-	-	-	-	-	-
	Conductivity	µS/cm		0	-	-	-	-	-	-	-
	Oil & Grease	mg/L		0	-	-	-	-	-	-	-
	pH	pH		0	-	-	-	-	-	-	-
3	TSS	mg/L	Upon discharge	2	17&22/12	17/12	2,000	8,530	50	No	100%ile limit not applicable due to discharge occurring after 90mm of rain.
	Conductivity	µS/cm		2	17&22/12	22/12	192	221	-	No	-
	Oil & Grease	mg/L		2	17&22/12	17&22/12	<5	<5	10	No	-
	pH	pH		2	17&22/12	17/12	6.71	7.81	8.5	No	-

EPL ID	Pollutant	Units of Measure	Monitoring Frequency	No. of Samples for the Month	Date Sampled	Date of Max. Value Obtained	Min Value	Max or Only Value	100%ile Limit	Exceed-ance (Yes/ No)	Comment/s
24	TSS	mg/L	Upon discharge	0	-	-	-	-	-	-	-
	Conductivity	µS/cm		0	-	-	-	-	-	-	-
	Oil & Grease	mg/L		0	-	-	-	-	-	-	-
	pH	pH		0	-	-	-	-	-	-	-
26	TSS	mg/L	Upon discharge	0	-	-	-	-	-	-	-
	Conductivity	µS/cm		0	-	-	-	-	-	-	-
	Oil & Grease	mg/L		0	-	-	-	-	-	-	-
	pH	pH		0	-	-	-	-	-	-	-
27	TSS	mg/L	Upon discharge	1	24/12/2020	-	-	327	50	No	100%ile limit not applicable due to discharge occurring after 90mm of rain.
	Conductivity	µS/cm		1	24/12/2020	-	-	244	-	No	-
	Oil & Grease	mg/L		1	24/12/2020	-	-	<5	10	No	-
	pH	pH		1	24/12/2020	-	-	6.62	8.5	No	-

**Table 3 – Monitoring (Quarterly & 6 Monthly – No Limits apply)**

EPL ID	Pollutant	Units of Measure	Monitoring Frequency	No. of Samples for the Period	Date Sampled	Date of Max. Value Obtained	Min Value	Mean Value	Median Value	Max or Only Value
9	Conductivity	µS/cm	6 monthly – (Mar- Sep)	1	-	-	-	-	-	-
	Lead	mg/L		1	-	-	-	-	-	-
	pH	pH		1	-	-	-	-	-	-
	Standing Water Level	metres		1	-	-	-	-	-	-
10	Conductivity	µS/cm	6 monthly – (Mar- Sep)	1	-	-	-	-	-	-
	Lead	mg/L		1	-	-	-	-	-	-
	pH	pH		1	-	-	-	-	-	-
	Standing Water Level	metres		1	-	-	-	-	-	-
12	Conductivity	µS/cm	6 monthly – (Mar- Sep)	1	-	-	-	-	-	-
	Lead	mg/L		1	-	-	-	-	-	-
	pH	pH		1	-	-	-	-	-	-
	Standing Water Level	metres		1	-	-	-	-	-	-
13	Conductivity	µS/cm	Quarterly - (Feb, May, Aug, Nov)	0	-	-	-	-	-	-
	Oil & Grease	mg/L		0	-	-	-	-	-	-
	pH	pH		0	-	-	-	-	-	-

EPL ID	Pollutant	Units of Measure	Monitoring Frequency	No. of Samples for the Period	Date Sampled	Date of Max. Value Obtained	Min Value	Mean Value	Median Value	Max or Only Value
	TSS	mg/L		0	-	-	-	-	-	-

*Note: From April 2012 to February 2019, Electrical Conductivity was reported with the incorrect unit of measure (mS/cm). From January 2019 it has been corrected to  $\mu$ S/cm.*



**Table 4 – Quarterly Attended Noise Monitoring**

(Noise Limits Apply -35dB LAeq(15min) -Day, Evening and Night;45dB LA1(1min) -Night )

(Extracts from consultants’ report for the quarter)

Date	Time	Total Noise Levels (dB)						Mine LAeq Noise Level (dB)	Wind Speed (m/s)	Wind Direction (°)	Stability Category	Rain (mm)
		LA eq	LA max	LA min	LA1	LA10	LA90					
<b>TN2</b>												
01/12/2020	11:53	36	67	25	44	36	27	<27	1.8	317	A	0
	12:10	36	55	27	46	38	29	<29	2.9	5	B	0
	12:26	35	55	24	46	37	27	<27	<b>4.2</b>	267	B	0
	12:42	34	52	24	44	37	27	<27	2.9	340	A	0
	13:03	36	52	24	44	38	28	<18 (I/A)	<b>4.4</b>	339	B	0
	13:19	45	72	24	56	45	28	<18 (I/A)	<b>4.8</b>	300	A	0
	21:35	32	48	27	37	34	29	<19 (I/A)	2.3	21	D	0
	21:51	36	59	28	44	38	30	<20 (I/A)	2.3	38	D	0
	22:07	43	58	32	52	47	35	<25 (I/A)	3.0	32	D	0
	22:22	42	64	34	49	45	38	<28 (I/A)	<b>4.1</b>	16	D	0
	22:38	42	55	32	50	45	36	<26 (I/A)	3.0	18	D	0
22:54	39	57	32	46	41	35	<25 (I/A)	<b>3.8</b>	357	D	0	
02/12/2020	12:32	35	69	21	45	29	21	<21	2.6	230	A	<b>3</b>
	12:50	44	64	20	56	47	28	<18 (I/A)	<b>3.8</b>	228	A	0
	13:06	33	55	22	44	36	25	<15 (I/A)	<b>5.2</b>	216	D	0

	13:21	29	48	21	38	32	23	<13 (I/A)	<b>3.1</b>	241	B	0
	13:39	27	49	18	37	28	20	20	<b>4.4</b>	244	A	0
	13:54	37	55	18	49	40	20	20	<b>3.6</b>	194	B	0
	21:28	34	49	27	38	36	30	<20 (I/A)	3.0	150	E	0
	21:44	33	56	26	37	35	30	<20 (I/A)	0.9	63	F	0
	22:00	35	52	27	41	36	31	<26	<b>5.6</b>	100	D	0
	22:15	34	47	28	38	36	31	<26	<b>5.0</b>	126	E	0
	22:31	32	48	26	36	34	28	<28	<b>3.4</b>	124	D	0
	22:47	31	45	26	35	32	29	28	<b>4.3</b>	104	E	0
03/12/2020	11:28	40	58	23	52	43	26	<28	<b>5.9</b>	281	D	0
	11:46	39	63	23	53	41	25	25	3.0	171	A	0
	12:03	28	50	23	36	30	25	25	1.4	127	A	0
	12:18	38	69	22	49	37	24	24	2.8	300	C	0
	12:34	38	56	21	49	41	25	25	<b>5.5</b>	267	D	0
	12:50	41	60	21	54	44	25	25	<b>5.1</b>	235	C	0
	22:33	43	63	28	51	47	33	<23 (I/A)	<b>4.9</b>	50	D	0
	22:48	33	50	24	45	34	27	<17 (I/A)	0.7	238	F	0
	23:03	29	39	24	33	31	27	<17 (I/A)	1.9	55	F	0
	23:18	31	49	23	42	32	26	<26	0.6	208	F	0
04/12/2020	10:13	40	73	27	51	35	29	30	1.8	309	A	0
	11:09	38	56	24	49	41	27	27	<b>4.9</b>	304	D	0
	11:25	38	54	25	47	41	29	<29	<b>4.3</b>	278	B	0
	11:40	45	78	27	52	43	30	<30	<b>3.6</b>	334	B	0
	11:56	40	61	28	51	42	31	<28	<b>3.1</b>	299	B	0
	12:12	42	68	26	53	45	28	<28	<b>6.0</b>	289	C	0

	21:23	36	46	33	39	38	35	35	1.2	41	E	0
	21:39	37	45	32	39	38	35	<35	1.0	26	E	0
	22:00	36	42	32	38	37	34	<34	2.3	62	F	0
	22:15	35	55	30	38	36	33	<33	1.1	19	E	0
	22:31	35	48	30	38	36	32	<32	1.1	335	D	0
	22:47	34	49	29	41	35	31	<31	1.2	42	E	0
<b>TN3</b>												
01/12/2020	12:33	46	56	38	53	49	40	<30 (I/A)	<b>4.4</b>	342	A	0
	12:52	49	56	43	54	51	45	<35 (I/A)	<b>4.9</b>	349	C	0
	13:14	48	58	40	56	51	43	<33 (I/A)	<b>3.4</b>	16	B	0
	13:33	50	59	41	57	53	44	<34 (I/A)	<b>4.6</b>	305	C	0
	13:51	51	60	43	58	54	47	<37 (I/A)	<b>5.1</b>	311	D	0
	14:11	51	60	41	56	53	47	<37 (I/A)	<b>6.1</b>	328	D	0
	21:07	42	56	36	53	42	39	<29 (I/A)	2.5	38	E	0
	21:26	39	46	36	42	41	38	<28 (I/A)	<b>3.2</b>	12	D	0
	22:00	38	46	32	42	40	35	<25 (I/A)	<b>3.4</b>	20	D	0
	22:15	39	45	32	43	42	35	<25 (I/A)	<b>4.4</b>	22	D	0
	22:32	36	44	32	43	39	33	<23 (I/A)	<b>3.6</b>	11	D	0
	22:48	39	47	32	43	42	33	<23 (I/A)	<b>3.2</b>	23	D	0
02/12/2020	13:10	42	64	23	56	41	25	<15 (I/A)	<b>4.2</b>	216	C	0
	13:30	34	55	22	43	37	24	<14 (I/A)	1.3	248	A	0
	13:46	35	58	23	44	37	26	<16 (I/A)	<b>3.9</b>	242	C	0
	14:09	49	76	22	60	36	23	<13 (I/A)	2.0	195	A	0
	14:29	37	63	21	47	33	23	<13 (I/A)	<b>3.5</b>	345	A	0
	14:54	37	60	23	44	39	26	<16 (I/A)	2.9	178	C	0

	21:14	50	61	40	56	53	45	<35 (I/A)	2.8	196	D	0
	21:29	48	55	40	54	51	44	<34 (I/A)	3.0	150	E	0
	22:00	46	54	40	52	48	42	<32 (I/A)	<b>5.6</b>	100	D	0
	22:15	43	49	37	47	45	40	<30 (I/A)	<b>5.0</b>	126	E	0
	22:40	40	47	36	44	42	38	<28 (I/A)	<b>4.9</b>	111	E	0
	23:05	42	51	36	49	45	38	<28 (I/A)	0.6	233	F	0
03/12/2020	12:22	42	64	24	55	44	28	<18 (I/A)	<b>5.3</b>	306	C	0
	12:41	44	70	24	53	40	28	<18 (I/A)	<b>4.4</b>	235	D	0
	12:57	39	62	24	50	42	29	<19 (I/A)	<b>4.6</b>	208	A	0
	13:19	40	67	25	47	40	28	<18 (I/A)	<b>4.3</b>	261	C	0
	13:40	35	51	25	42	38	28	<18 (I/A)	<b>4.3</b>	196	C	0
	13:57	38	54	25	48	42	27	<17 (I/A)	<b>4.7</b>	254	B	0
	22:21	48	58	42	51	50	45	<35 (I/A)	1.7	18	F	0
	22:36	48	67	41	52	50	44	<34 (I/A)	<b>4.9</b>	50	D	0
	22:52	46	51	40	50	49	43	<33 (I/A)	1.0	305	F	0
	23:07	47	52	41	50	49	43	<33 (I/A)	1.9	55	F	0
04/12/2020	12:04	45	67	30	56	44	35	<25 (I/A)	<b>4.9</b>	275	C	0
	12:19	49	67	35	61	51	39	<29 (I/A)	<b>6.7</b>	318	D	0
	12:35	47	69	32	61	46	35	<25 (I/A)	<b>4.9</b>	328	D	0
	12:50	49	69	31	63	46	35	<25 (I/A)	<b>4.8</b>	306	C	0
	13:17	48	69	28	63	47	31	<21 (I/A)	<b>4.9</b>	334	C	0
	13:46	46	68	26	59	46	31	<21 (I/A)	<b>4.1</b>	298	C	0
	19:47	53	73	34	66	56	37	<27 (I/A)	1.9	264	F	0
	20:03	48	69	36	62	49	38	<28 (I/A)	0.4	273	F	0
	00:40	36	47	34	37	37	35	28	1.9	62	F	0

	00:57	37	59	35	38	37	36	30	1.8	52	E	0
	01:12	37	44	35	39	38	36	31	1.4	60	D	0
	01:28	37	46	35	43	38	36	32	1.8	55	E	0
<b>TN4</b>												
01/12/2020	10:37	37	61	28	48	39	31	<21 (I/A)	<b>4.8</b>	288	D	0
	10:53	41	70	29	51	40	32	<22 (I/A)	2.8	318	B	0
	11:10	39	59	28	47	42	31	<21 (I/A)	<b>4.9</b>	323	A	0
	11:25	36	56	25	44	40	29	<19 (I/A)	<b>4.4</b>	0	C	0
	11:41	42	59	25	51	46	31	<21 (I/A)	2.1	5	A	0
	11:59	43	67	31	52	47	35	<25 (I/A)	3.2	334	B	0
	20:57	39	55	34	43	41	36	<26 (I/A)	2.3	18	D	0
	21:11	39	44	33	43	41	36	<26 (I/A)	3.0	12	D	0
	23:28	44	57	35	51	46	38	<28 (I/A)	2.8	17	D	0
	23:43	50	65	40	57	53	44	<34 (I/A)	2.5	355	D	0
	23:58	40	60	32	45	42	35	<25 (I/A)	<b>5.2</b>	218	D	0
	00:13	39	45	31	43	41	35	<25 (I/A)	<b>6.2</b>	161	D	0
02/12/2020	11:18	48	79	32	58	50	37	<27 (I/A)	1.0	91	A	0
	11:35	44	76	31	54	47	35	<25 (I/A)	<b>3.1</b>	143	A	0
	11:52	41	68	28	53	42	31	<21 (I/A)	<b>3.3</b>	132	B	0
	12:08	41	70	28	53	41	30	<20 (I/A)	2.2	107	A	0
	12:23	40	61	32	46	43	36	<26 (I/A)	1.2	48	A	0
	12:41	44	72	32	56	43	35	<25 (I/A)	<b>4.3</b>	235	D	0
	20:42	53	60	44	59	56	48	<38 (I/A)	<b>5.0</b>	173	D	0
	20:58	48	55	41	54	51	44	<34 (I/A)	<b>5.8</b>	158	D	0
	23:22	41	54	34	46	44	37	<30	<b>3.4</b>	130	E	0

	23:39	42	51	36	47	45	39	<30	1.8	184	E	0
	23:55	40	48	33	46	44	36	<30	1.4	237	E	0
	00:10	45	54	38	51	47	41	<31 (I/A)	2.6	168	D	0
03/12/2020	10:25	36	55	28	41	38	31	<21 (I/A)	<b>3.6</b>	216	A	0
	10:41	35	57	26	42	38	30	<20 (I/A)	<b>4.5</b>	261	A	0
	10:56	37	66	24	49	39	27	<17 (I/A)	<b>5.3</b>	274	A	0
	11:12	36	54	25	41	40	30	<20 (I/A)	<b>4.1</b>	223	B	0
	11:32	37	57	23	44	40	28	<18 (I/A)	<b>5.6</b>	257	B	0
	11:51	35	58	24	42	38	28	<18 (I/A)	<b>3.5</b>	224	A	0
	23:59	39	50	31	44	42	33	29	2.2	35	F	0
	00:16	40	47	32	45	43	35	30	<b>3.2</b>	42	D	0
	00:31	42	49	35	47	45	38	<28 (I/A)	3.0	17	D	0
	00:46	42	52	35	47	45	38	<28 (I/A)	<b>4.2</b>	49	D	0
04/12/2020	10:12	46	68	26	59	47	28	<18 (I/A)	1.8	309	A	0
	10:30	33	59	25	39	35	27	<17 (I/A)	2.7	215	A	0
	10:46	36	58	25	46	38	29	<19 (I/A)	<b>3.7</b>	257	A	0
	11:01	38	59	24	51	39	28	<18 (I/A)	<b>3.5</b>	263	B	0
	11:16	37	55	25	43	40	29	<19 (I/A)	<b>4.6</b>	310	D	0
	11:33	40	62	25	52	40	28	<18 (I/A)	<b>4.2</b>	309	C	0
	20:33	42	51	32	47	46	35	<25 (I/A)	0.4	206	F	0
	20:48	42	57	34	47	46	36	<26 (I/A)	0.4	19	F	0
	23:20	35	49	32	37	36	34	<24 (I/A)	1.2	352	D	0
	23:36	35	48	32	37	36	33	<26	1.2	61	E	0
	23:52	34	53	31	40	35	33	<26	1.4	60	D	0
	00:08	35	51	31	42	37	33	<26	1.8	55	E	0

Notes:

- Acronyms used: I/A = Inaudible, m/s = metres/second, dB = decibel.
- Coloured Cells = Non-compliant weather conditions not included in calculation of average for that period. Non-compliant weather conditions are any:
  - a) Wind speeds greater than 3m/s at 10m above ground level
  - b) Stability Category F temperature inversion conditions and wind speeds greater than 2m/s, 10m above the ground
  - c) Stability category G temperature inversions.
- Real time weather conditions retrieved from the mine, after monitoring occurs.

Attended noise monitoring was conducted at the “Bungalow” (TN4), “Barbers Lagoon” (TN3) and “Matong” (TN2) properties from 1<sup>st</sup> to the 4th of December 2020. The summary table (Table 4) displays a comprehensive results table displaying all measurements. The noise criterion for the mine is 35dB(A) Leq (15 min) for all operating times.

Noise from the mine must not exceed 45 dB(A) L1 (1 min) between 10 pm and 7 am. This is to minimise the potential for sleep disturbance as a result of individual loud noises from the mine. The results of the sleep disturbance monitoring show that the measured L1 (1 min) noise level did not exceed the sleep disturbance criterion.

The results above show that noise emissions from the mine did not exceed the operational noise criterion at the “Barbers Lagoon”, “Bungalow” or “Matong” monitoring locations during the monitoring event during the entire monitoring period.

**Table 5 – Monthly Monitoring (Blasts – Limits Apply)**

Location	Parameter	Units of Measure	Frequency	No. of Blasts for the Month	Average Value	Max Value	100%ile Limit	(Potential) Non-compliance /breach	Date of Max. Value Obtained
Coomalgah (TB2)	Blast Noise	dB (Lin Peak)	Every Blast	6	97.17	105.60	<b>120</b>	<b>Nil</b>	10/12/2020
	Blast Vibration	mm/s	Every Blast	6	0.19	0.40	<b>10</b>	<b>Nil</b>	4/12/2020

**Table 6- Monthly Monitoring (Dust PM10 – No Limits apply)**

Location	No. of samples required by licence	Lowest sample value	Mean of sample	Highest sample value
“Flixton” property* TEOM (µg/m <sup>3</sup> )	Continuous	0	9.1	46.1

*\*Mine owned property – no limit apply*



Figure 1 – EPL 12365 Monitoring Locations

